

\$69,900 - 1 Street, Rural Northern Lights, County of

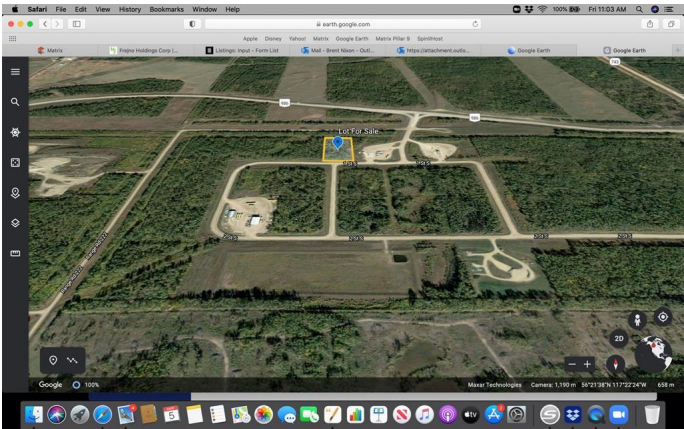
MLS® #A2133814

\$69,900

0 Bedroom, 0.00 Bathroom,
Land on 4.97 Acres

NONE, Rural Northern Lights, County of,
Alberta

Talk about a deal This 4.97 acre industrial lot located in the Weberville Industrial Park This Land has never been developed and is ready for it's new owner. This lot is close to the Mercer Pulp Mill as well as Hwy 986 and Hwy 743 just 10 miles north of Peace River. In the Weberville Industrial Subdivision The time is now Call to View



Essential Information

| | |
|-----------|-----------------|
| MLS® # | A2133814 |
| Price | \$69,900 |
| Bathrooms | 0.00 |
| Acres | 4.97 |
| Type | Land |
| Sub-Type | Industrial Land |
| Status | Active |

Community Information

| | |
|-------------|----------------------------------|
| Address | 1 Street |
| Subdivision | NONE |
| City | Rural Northern Lights, County of |
| County | Northern Lights, County of |
| Province | Alberta |
| Postal Code | T8S 1S2 |

Additional Information

| | |
|-------------|----------------|
| Date Listed | May 21st, 2024 |
|-------------|----------------|

| | |
|----------------|------------|
| Days on Market | 360 |
| Zoning | Industrial |

Listing Details

| | |
|----------------|----------------------------|
| Listing Office | Royal LePage Valley Realty |
|----------------|----------------------------|

Data is supplied by Pillar 9â„¢ MLS® System. Pillar 9â„¢ is the owner of the copyright in its MLS® System. Data is deemed reliable but is not guaranteed accurate by Pillar 9â„¢. The trademarks MLS®, Multiple Listing Service® and the associated logos are owned by The Canadian Real Estate Association (CREA) and identify the quality of services provided by real estate professionals who are members of CREA. Used under license.