

\$1,499,000 - 3101 41 Avenue, Lloydminster

MLS® #A2186076

\$1,499,000

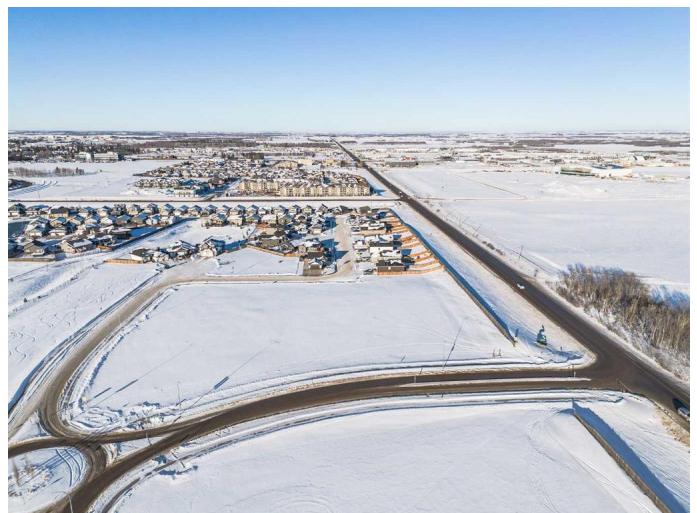
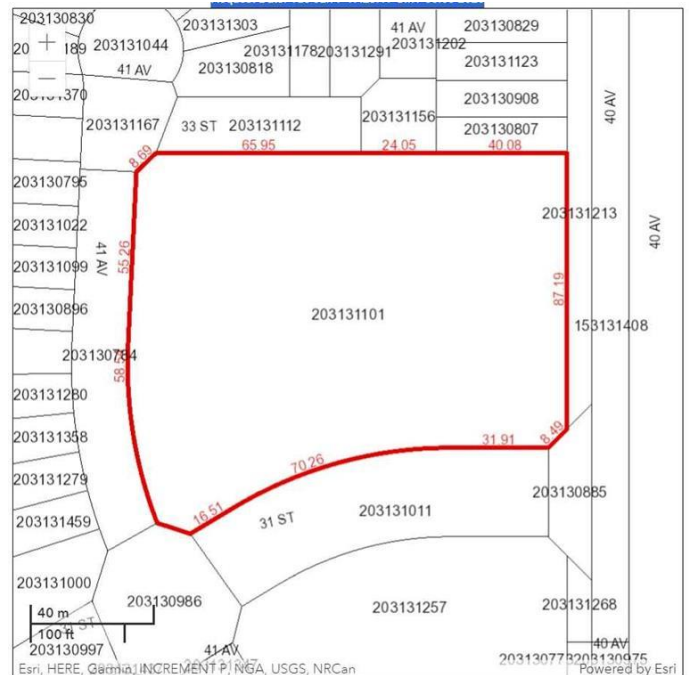
0 Bedroom, 0.00 Bathroom,
Land on 3.52 Acres

Aurora, Lloydminster, Saskatchewan

Prime development opportunity in an exceptional location close to the new Cenovus Hub arena complex and future retail development site. This property is zoned R5 High Density Residential District and has an area of 3.53 acres (153,471 square feet) with easy access from the Aurora subdivision on the Saskatchewan side to Lloydminster to 40 Ave which takes you past the Cenovus Hub location (north) and to the TransCanada highway. This is a perfect location to invest in apartment development or propose a development with commercial on the main floor building level (a discretionary use under the land use bylaw) and apartments on the second and subsequent levels of the structure you build. This property is serviced to the property lines and off-site service fees are paid for this property. This is a great opportunity to own an apartment site in a busy and growing community.

Essential Information

MLS® #	A2186076
Price	\$1,499,000
Bathrooms	0.00
Acres	3.52
Type	Land
Sub-Type	Residential Land
Status	Active



Community Information

Address	3101 41 Avenue
Subdivision	Aurora
City	Lloydminster
County	Lloydminster
Province	Saskatchewan
Postal Code	S9V 2H5

Exterior

Lot Description	City Lot, Corner Lot, Irregular Lot, Paved
-----------------	--

Additional Information

Date Listed	January 7th, 2025
Days on Market	230
Zoning	R5

Listing Details

Listing Office	MUSGRAVE AGENCIES
----------------	-------------------

Data is supplied by Pillar 9â„¢ MLS® System. Pillar 9â„¢ is the owner of the copyright in its MLS® System. Data is deemed reliable but is not guaranteed accurate by Pillar 9â„¢. The trademarks MLS®, Multiple Listing Service® and the associated logos are owned by The Canadian Real Estate Association (CREA) and identify the quality of services provided by real estate professionals who are members of CREA. Used under license.