

\$13 - 103a, 1501 Dunmore Road Se, Medicine Hat

MLS® #A2189691

\$13

0 Bedroom, 0.00 Bathroom,
Commercial on 0.00 Acres

Southview-Park Meadows, Medicine Hat,
Alberta

This 1,086 sq ft space on Dunmore Road SE offers abundant natural light, off-street and on-street parking. Ideal for various businesses, it combines convenience and visibility in a prime location with easy access to surrounding areas. Perfect for those seeking a bright, accessible workspace.

Built in 1980

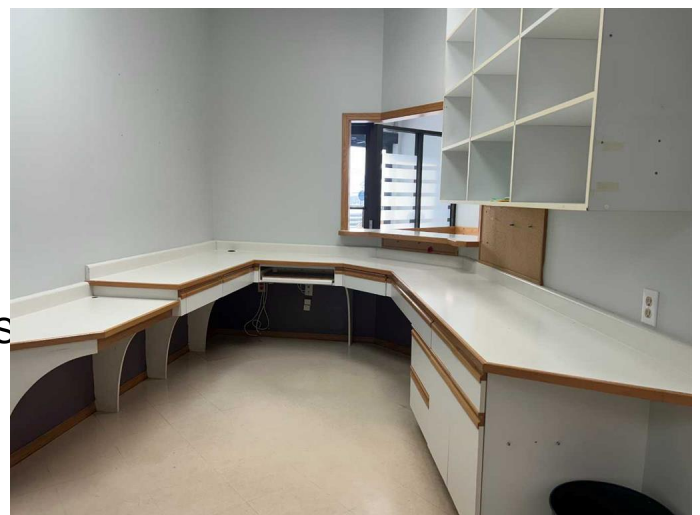
Essential Information

MLS® #	A2189691
Price	\$13
Bathrooms	0.00
Acres	0.00
Year Built	1980
Type	Commercial
Sub-Type	Office
Status	Active

Community Information

Address	103a, 1501 Dunmore Road S
Subdivision	Southview-Park Meadows
City	Medicine Hat
County	Medicine Hat
Province	Alberta
Postal Code	T1A 1Z8

Additional Information



Date Listed January 21st, 2025

Days on Market 106

Listing Details

Listing Office RE/MAX MEDALTA REAL ESTATE

Data is supplied by Pillar 9â„¢ MLS® System. Pillar 9â„¢ is the owner of the copyright in its MLS® System. Data is deemed reliable but is not guaranteed accurate by Pillar 9â„¢. The trademarks MLS®, Multiple Listing Service® and the associated logos are owned by The Canadian Real Estate Association (CREA) and identify the quality of services provided by real estate professionals who are members of CREA. Used under license.