

# \$2,495,000 - 100 Commercial Drive, Rural Rocky View County

MLS® #A2192469

**\$2,495,000**

0 Bedroom, 0.00 Bathroom,  
Commercial on 0.00 Acres

Springbank, Rural Rocky View County, Alberta

Click brochure link for more details\*\* Rare commercial ownership position on the West side of Calgary. Low site coverage, providing a large site for additional development. 1,200 SF utility building provides great space for secure storage, or can maintain current tenant in place leasing for \$1,500/month. Large landscaped property with beautiful brick building construction. Mountain views. Lower level storage/bonus space. Great access to Highway 1 and the Ring Road. Approximately 1 hour to Canmore and Banff. This property is also available for lease at \$20/sqft.



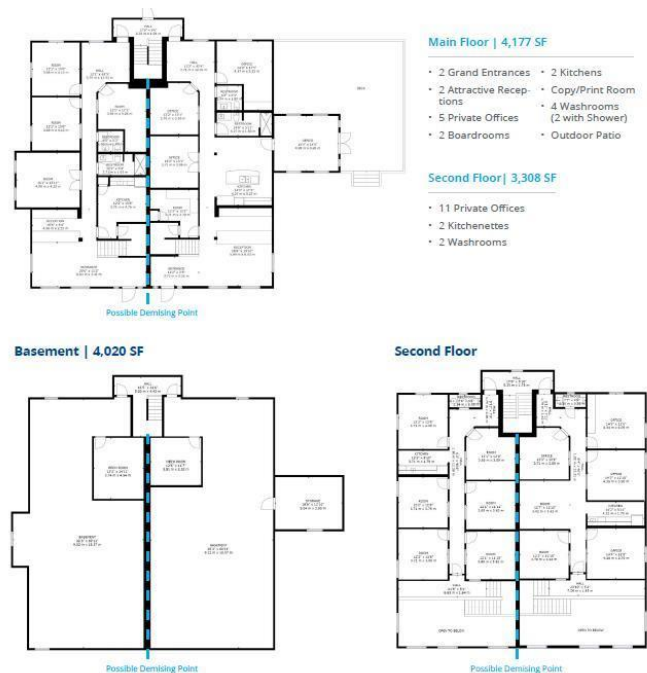
Built in 2010

## Essential Information

MLS® #	A2192469
Price	\$2,495,000
Bathrooms	0.00
Acres	0.00
Year Built	2010
Type	Commercial
Sub-Type	Office
Status	Active

## Community Information

Address	100 Commercial Drive
Subdivision	Springbank



City	Rural Rocky View County
County	Rocky View County
Province	Alberta
Postal Code	T3Z 2A7

### **Additional Information**

Date Listed	February 4th, 2025
Days on Market	104
Zoning	B-REG (Business, Regional

### **Listing Details**

Listing Office	Honestdoor Inc.
----------------	-----------------

Data is supplied by Pillar 9â„¢ MLS® System. Pillar 9â„¢ is the owner of the copyright in its MLS® System. Data is deemed reliable but is not guaranteed accurate by Pillar 9â„¢. The trademarks MLS®, Multiple Listing Service® and the associated logos are owned by The Canadian Real Estate Association (CREA) and identify the quality of services provided by real estate professionals who are members of CREA. Used under license.