

# \$2,900,000 - 241202 Vale View Road, Rural Rocky View County

MLS® #A2196360

**\$2,900,000**

0 Bedroom, 0.00 Bathroom,  
Land on 10.03 Acres

NONE, Rural Rocky View County, Alberta

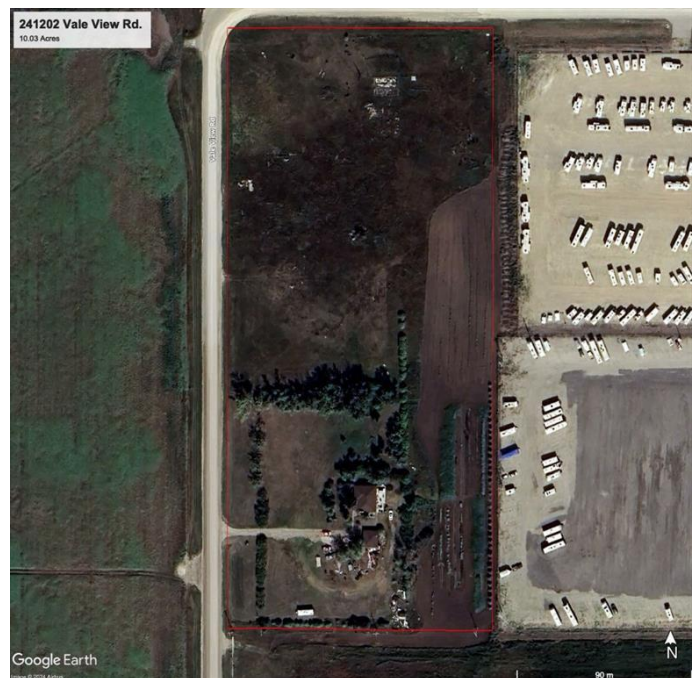
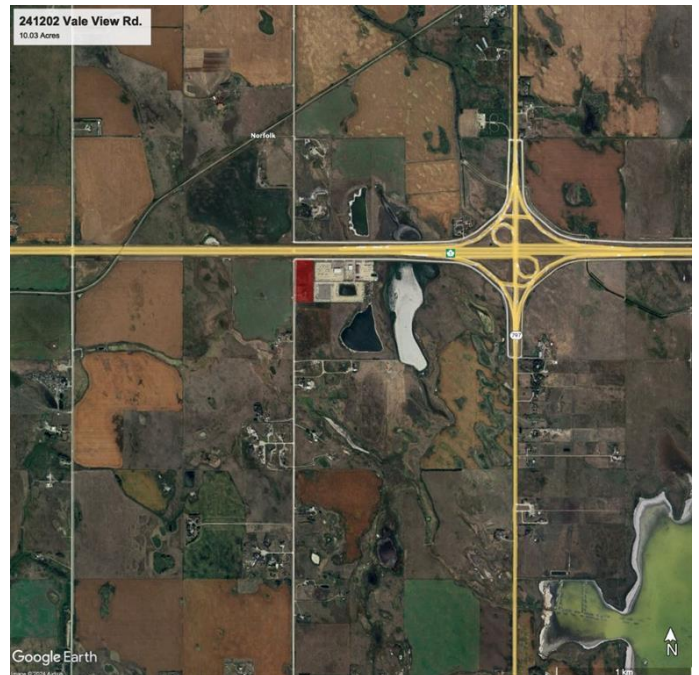
Prime Highway Commercial Opportunity! This 10-acre parcel, located just east of Chestermere in Rocky View County, boasts a strategic location on the south side of Highway 1 with high visibility to over 27,000 vehicles daily. Zoned C-HWY, this property offers the perfect setting for your business, attracting traffic heading east to Langdon, Drumheller, Strathmore, and beyond. With easy access from the interchange, your business will be easily accessible to customers. Don't miss this chance to join reputable businesses like ArrKann Trailer and RV Center, Butler Built, and Remuda Building Ltd. in this thriving highway development. Seize this opportunity to put your business where people can see it!

## Essential Information

MLS® #	A2196360
Price	\$2,900,000
Bathrooms	0.00
Acres	10.03
Type	Land
Sub-Type	Commercial Land
Status	Active

## Community Information

Address	241202 Vale View Road
Subdivision	NONE



City	Rural Rocky View County
County	Rocky View County
Province	Alberta
Postal Code	T1X 2G3

### **Additional Information**

Date Listed	February 20th, 2025
Days on Market	184
Zoning	C-HWY

### **Listing Details**

Listing Office	Terradigm Real Estate Advisors Ltd.
----------------	-------------------------------------

Data is supplied by Pillar 9â„¢ MLS® System. Pillar 9â„¢ is the owner of the copyright in its MLS® System. Data is deemed reliable but is not guaranteed accurate by Pillar 9â„¢. The trademarks MLS®, Multiple Listing Service® and the associated logos are owned by The Canadian Real Estate Association (CREA) and identify the quality of services provided by real estate professionals who are members of CREA. Used under license.