

# \$499,900 - 114, 35102 Range Road 24, Rural Red Deer County

---

MLS® #A2196380

**\$499,900**

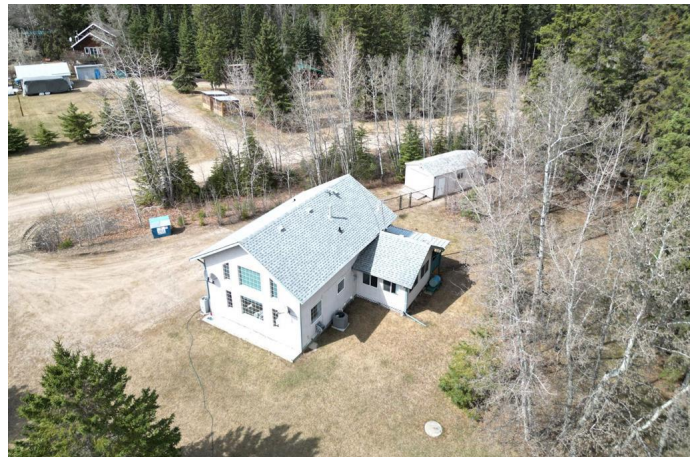
3 Bedroom, 2.00 Bathroom, 1,291 sqft  
Residential on 1.03 Acres

Red Lodge Estates, Rural Red Deer County,  
Alberta

Escape to the tranquil beauty of this 1.03-acre acreage in the desirable Red Lodge Estates, where nature meets comfort. Set on a private, treed lot with manicured grounds and new rear fencing - a perfect way to keep the children or pets close, this property provides the ultimate peaceful retreat with room for ample outdoor storage. A single-car detached garage offers convenient storage, while the home boasts 3 spacious bedrooms, including a master suite in the spacious loft, perfect for enjoying the serene surroundings.

The open-concept kitchen, dining, and living area is bright and inviting, with a cozy gas fireplace creating a warm ambiance for all seasons. A charming three-season room extends your living space, providing a perfect spot to relax and take in the beauty of the outdoors year-round.

With one full bathroom and ample storage throughout - including the cement crawl space that is a great place for Christmas decorations, extra outdoor supplies, and more, this home is ideal for those seeking both comfort and practicality. For added peace of mind, the property comes equipped with a camera security system. Situated just a short distance from the picturesque Little Red Deer River, enjoy easy access to outdoor activities like



hiking and fishing. In 2020 installed was a new furnace, hot water tank, pressure tank and central air. And in 2022 there was new plumbing throughout the entire house (to replace previous poly b plumbing).

This acreage offers the perfect balance of privacy, convenience, and natural beauty - shows a 10+, spotless clean and move in readyâ€”make it your own country sanctuary today, just in time to enjoy the summer ahead!

Built in 1997

### Essential Information

MLS® #	A2196380
Price	\$499,900
Bedrooms	3
Bathrooms	2.00
Full Baths	1
Half Baths	1
Square Footage	1,291
Acres	1.03
Year Built	1997
Type	Residential
Sub-Type	Detached
Style	Acreage with Residence, 1 and Half Storey
Status	Active

### Community Information

Address	114, 35102 Range Road 24
Subdivision	Red Lodge Estates
City	Rural Red Deer County
County	Red Deer County
Province	Alberta
Postal Code	T4G 0K2

### Amenities

Parking	Driveway, Off Street, Single Garage Detached
# of Garages	1

## Interior

Interior Features	Ceiling Fan(s), Closet Organizers, Central Vacuum, High Ceilings, Laminate Counters, Open Floorplan, Storage, Vaulted Ceiling(s), Walk-In Closet(s)
Appliances	Refrigerator, Central Air Conditioner, Electric Stove, Microwave, Portable Dishwasher, Washer/Dryer, Window Coverings
Heating	Forced Air, High Efficiency, Natural Gas
Cooling	Central Air
Fireplace	Yes
# of Fireplaces	1
Fireplaces	Gas, Living Room, Mantle
Has Basement	Yes
Basement	Crawl Space, See Remarks

## Exterior

Exterior Features	Dog Run, Fire Pit, Private Yard, Rain Barrel/Cistern(s), Rain Gutters, Storage
Lot Description	Back Yard, Landscaped, Rectangular Lot
Roof	Asphalt Shingle
Construction	Concrete, Vinyl Siding, Wood Frame
Foundation	Poured Concrete

## Additional Information

Date Listed	February 27th, 2025
Days on Market	108
Zoning	R-6

## Listing Details

Listing Office	RE/MAX real estate central alberta
----------------	------------------------------------

Data is supplied by Pillar 9â„¢ MLS® System. Pillar 9â„¢ is the owner of the copyright in its MLS® System. Data is deemed reliable but is not guaranteed accurate by Pillar 9â„¢. The trademarks MLS®, Multiple Listing Service® and the associated logos are owned by The Canadian Real Estate Association (CREA) and identify the quality of services provided by real estate professionals who are members of CREA. Used under license.