

\$5,950,000 - W6;6;72;1 Se, Grande Prairie

MLS® #A2198728

\$5,950,000

0 Bedroom, 0.00 Bathroom,
Land on 159.00 Acres

NONE, Grande Prairie, Alberta

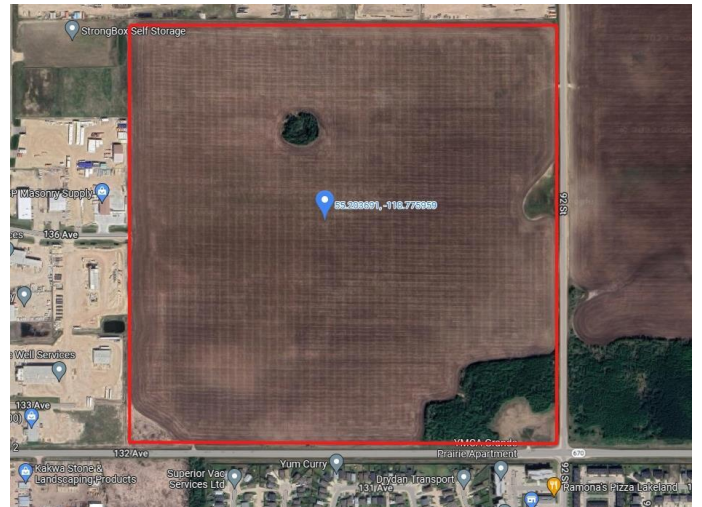
This prime 159 Acre commercial parcel of land is the perfect opportunity for business development. Located within Grande Prairie City limits just North of 132nd Avenue (Keddies Road) and West of 92nd Street, this lot provides secondary highway frontage and is surrounded by existing Industrial park. As the next piece of land to be developed in the area, this is a unique opportunity to be the first to invest and establish a presence in a high-growth region. With easy access to the city and other businesses in the industrial park, this land is ideal for a variety of commercial uses. Don't miss out on this chance to secure your future in Grande Prairie - contact us today to learn more and schedule a visit to the property!

Essential Information

MLS® #	A2198728
Price	\$5,950,000
Bathrooms	0.00
Acres	159.00
Type	Land
Sub-Type	Commercial Land
Status	Active

Community Information

Address	W6;6;72;1 Se
Subdivision	NONE



City	Grande Prairie
County	Grande Prairie
Province	Alberta
Postal Code	T8X0K4

Additional Information

Date Listed	March 4th, 2025
Days on Market	172
Zoning	UR

Listing Details

Listing Office	Grassroots Realty Group Ltd.
----------------	------------------------------

Data is supplied by Pillar 9â„¢ MLS® System. Pillar 9â„¢ is the owner of the copyright in its MLS® System. Data is deemed reliable but is not guaranteed accurate by Pillar 9â„¢. The trademarks MLS®, Multiple Listing Service® and the associated logos are owned by The Canadian Real Estate Association (CREA) and identify the quality of services provided by real estate professionals who are members of CREA. Used under license.