

\$384,900 - 3314, 6 Merganser Drive W, Chestermere

MLS® #A2206827

\$384,900

2 Bedroom, 2.00 Bathroom, 694 sqft

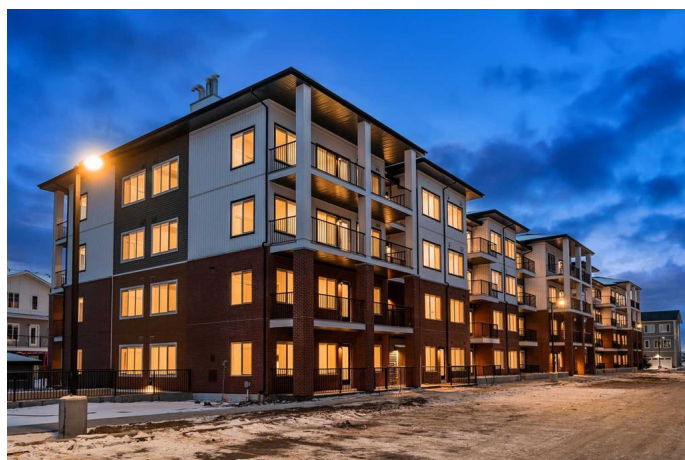
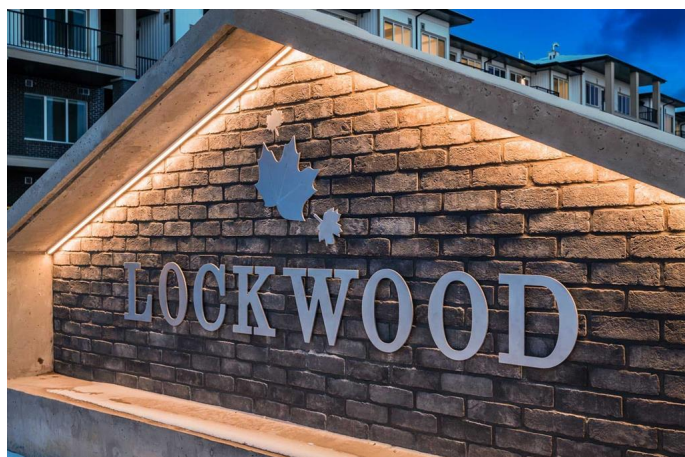
Residential on 0.00 Acres

Chelsea_CH, Chestermere, Alberta

Introducing the stunning new Lockwood Condos by TRUMAN, ideally located in the highly desirable and growing community of Chelsea in Chestermere. This meticulously designed 2-bedroom, 2-bathroom condo with a versatile den offers the perfect balance of comfort and style, complete with 1 titled parking stall for your convenience. Nestled just minutes from Chestermere Lake, this condo offers easy access to outdoor recreation, parks, walking trails, and playgrounds. Whether you enjoy a leisurely walk by the lake or an active day outdoors, this location has it all. Additionally, you'll be just a short drive from Chestermere Station and Chestermere Crossing, where you can explore a variety of shopping, dining, and essential services. Step inside to an open-concept floor plan, where a spacious den offers the perfect space for a home office or personal retreat.

This home is finished with the highest quality materials, from luxurious vinyl plank flooring throughout the living areas to the high ceilings that create a sense of openness. The kitchen is a true highlight, featuring full-height cabinetry with soft-close doors and drawers, sleek stainless steel appliances, and a well-appointed pantry. The elegant quartz countertops and eat-up bar create the perfect setting for casual dining or entertaining guests.

The primary bedroom is a true sanctuary, boasting a spacious walk-through closet and a 3-piece ensuite. An additional well-sized bedroom and a 4-piece main bathroom offer



ample space for family or guests, while the convenient in-suite laundry adds an extra layer of practicality. Beyond the front door, enjoy a range of amenities designed to elevate your lifestyle. Stay active in the fully-equipped gym, or unwind in the owners' lounge. With convenient bike storage, youâ€™ll have no trouble exploring the beautiful surroundings of Chestermere at your leisure. This bright, airy home is move-in ready, offering the perfect opportunity to embrace the exceptional TRUMAN lifestyle. Live better, right here in the heart of Chelsea in Chestermere â€” where convenience, luxury, and comfort await.

*Photo gallery of similar home available.

Built in 2024

Essential Information

MLS® #	A2206827
Price	\$384,900
Bedrooms	2
Bathrooms	2.00
Full Baths	2
Square Footage	694
Acres	0.00
Year Built	2024
Type	Residential
Sub-Type	Apartment
Style	Single Level Unit
Status	Active

Community Information

Address	3314, 6 Merganser Drive W
Subdivision	Chelsea_CH
City	Chestermere
County	Chestermere
Province	Alberta
Postal Code	T1X2Y2

Amenities

Amenities	Elevator(s), Fitness Center, Parking, Party Room, Playground, Snow Removal, Trash, Visitor Parking, Bicycle Storage
Parking Spaces	1
Parking	Titled, Underground

Interior

Interior Features	See Remarks
Appliances	Dishwasher, Microwave Hood Fan, Refrigerator, Washer/Dryer, Window Coverings, Range
Heating	Baseboard
Cooling	None
# of Stories	4
Basement	None

Exterior

Exterior Features	Balcony
Roof	Membrane
Construction	Composite Siding
Foundation	Poured Concrete

Additional Information

Date Listed	March 29th, 2025
Days on Market	43
Zoning	M-2

Listing Details

Listing Office	RE/MAX Real Estate (Central)
----------------	------------------------------

Data is supplied by Pillar 9â„¢ MLSÂ® System. Pillar 9â„¢ is the owner of the copyright in its MLSÂ® System. Data is deemed reliable but is not guaranteed accurate by Pillar 9â„¢. The trademarks MLSÂ®, Multiple Listing ServiceÂ® and the associated logos are owned by The Canadian Real Estate Association (CREA) and identify the quality of services provided by real estate professionals who are members of CREA. Used under license.