

\$1,149,000 - 153 Waterford Heath, Chestermere

MLS® #A2209864

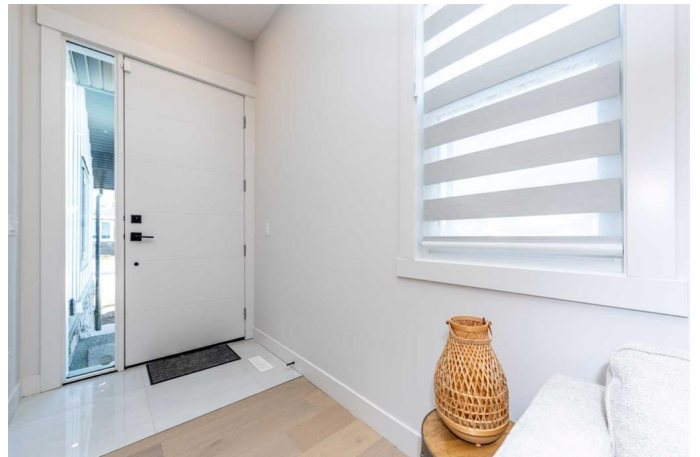
\$1,149,000

7 Bedroom, 5.00 Bathroom, 3,410 sqft

Residential on 0.13 Acres

N/A, Chestermere, Alberta

Welcome to the incredible Devine Custom Homes SHOW-HOME! This home is loaded with luxury upgrades and will impress even the most discerning buyer. Experience luxury living at its finest with this stunning custom-built home located in the community of Waterford, Chestermere. Built by Devine Custom Homes; where build quality and putting out a solid product are paramount. The main level features a spacious living room, a main floor bedroom, a full bathroom, a mud room, and a family room with a cozy gas fireplace and large windows that flood the space with natural light. The Japandi style Gourmet kitchen is a chef's dream, with High-end stainless-steel appliances, full-height cabinetry, a big kitchen island, and a dining room perfect for enjoying healthy meals with your family. This gorgeous home also features a spice kitchen with ample pantry storage, as well as upgraded black faucets, lighting, and fixtures. With 8ft doors throughout the main level and engineered flooring, this home exudes elegance and luxury. Upstairs, you'll find four bedrooms, three bathrooms, a laundry room with cabinet storage and a sink, and a big bonus room for your entertainment needs. The primary master bedroom is a true retreat, with a 5pc ensuite, a steam shower, and a spacious walk-in closet with shelving. The second master bedroom also features a walk-in closet and a 3pc ensuite, while the other two bedrooms share a common 3pc bathroom. The finished 9ft ceiling basement



with a separate entrance is perfect for entertaining, with a big recreation room and wet bar. There is also two additional bedrooms and a 3pc bathroom in the basement, providing plenty of space for guests or extended family. The triple car garage and spacious driveway offer ample parking for all your vehicles. This home is conveniently located close to shopping, schools, the lake, and easy access to 17th Ave and Glenmore Trail. Don't miss out on the opportunity to own this new home in a great new neighbourhood.

Built in 2023

Essential Information

| | |
|----------------|-------------|
| MLS® # | A2209864 |
| Price | \$1,149,000 |
| Bedrooms | 7 |
| Bathrooms | 5.00 |
| Full Baths | 5 |
| Square Footage | 3,410 |
| Acres | 0.13 |
| Year Built | 2023 |
| Type | Residential |
| Sub-Type | Detached |
| Style | 2 Storey |
| Status | Active |

Community Information

| | |
|-------------|---------------------|
| Address | 153 Waterford Heath |
| Subdivision | N/A |
| City | Chestermere |
| County | Chestermere |
| Province | Alberta |
| Postal Code | T1X 2T9 |

Amenities

| | |
|----------------|------------------------|
| Parking Spaces | 6 |
| Parking | Triple Garage Attached |

of Garages 3

Interior

Interior Features High Ceilings, Kitchen Island, Open Floorplan, Quartz Counters, Walk-In Closet(s)

Appliances Dishwasher, Freezer, Gas Range, Microwave, Range Hood, Refrigerator

Heating Forced Air

Cooling None

Fireplace Yes

of Fireplaces 1

Fireplaces Gas

Has Basement Yes

Basement Exterior Entry, Finished, Full

Exterior

Exterior Features BBQ gas line

Lot Description Corner Lot, Level

Roof Asphalt Shingle

Construction Cement Fiber Board, Concrete, Stucco, Wood Frame

Foundation Poured Concrete

Additional Information

Date Listed April 8th, 2025

Days on Market 34

Zoning RC-1

Listing Details

Listing Office Real Broker

Data is supplied by Pillar 9â„¢ MLS® System. Pillar 9â„¢ is the owner of the copyright in its MLS® System. Data is deemed reliable but is not guaranteed accurate by Pillar 9â„¢. The trademarks MLS®, Multiple Listing Service® and the associated logos are owned by The Canadian Real Estate Association (CREA) and identify the quality of services provided by real estate professionals who are members of CREA. Used under license.