

# \$219,000 - 123 123 Street Se, Calgary

MLS® #A2210778

**\$219,000**

0 Bedroom, 0.00 Bathroom,  
Commercial on 0.00 Acres

Mayland, Calgary, Alberta

Well-equipped, fully built-out restaurant in a central location â€™ ideal for a wide variety of cuisines including Chinese, Korean, Japanese, Italian, and more. Restaurant with full commercial kitchen: commercial canopy, gas grill, stock pot range, commercial wok range, deep frier, freezer, multiple display cooler, commercial dishwasher, glasswasher, draft beer dispenser

Spacious layout: 1,532 sq ft with 44 indoor seats + 14 patio seats

Excellent rent: only \$3,315/month (GST included), 8 years remaining

Utilities average under \$500/month

High ceilings â€™ over 18 ft!

Menâ€™s & Womenâ€™s washrooms,  
storage room

Ample shared parking available

Perfect for:

Dine-in and take-out operations

Ghost kitchen or central food processing

Food Business looking to launch or expand quickly with minimal build-out time

Location: easy access to Memorial Dr,

Deerfoot, Downtown, Barlow Tr

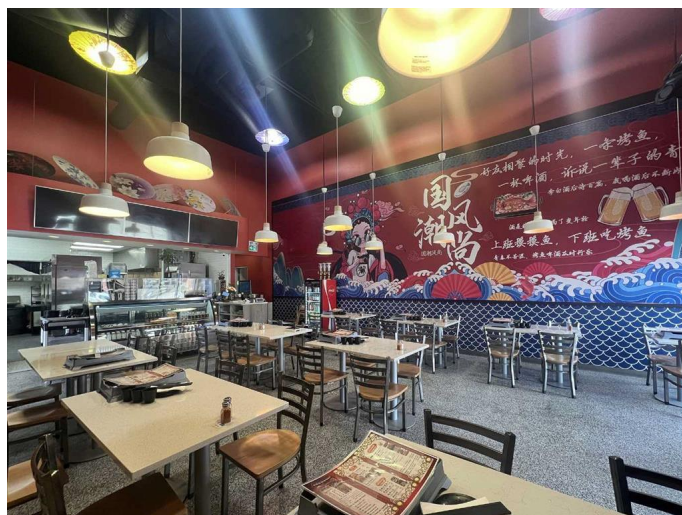
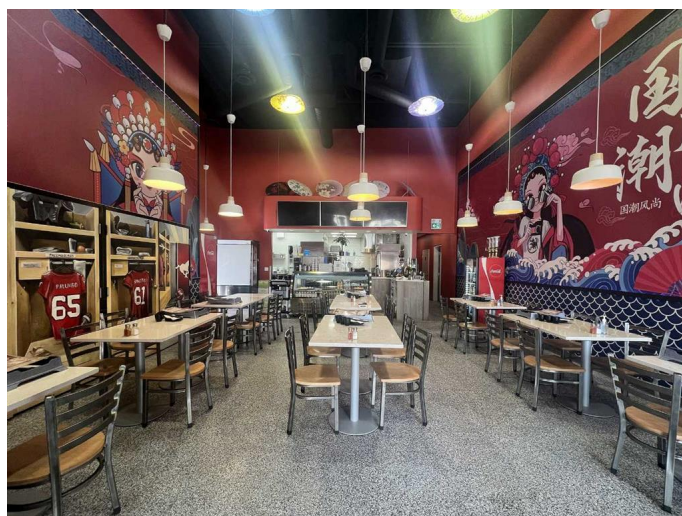
Asset sale only â€™ no financials provided.

Built in 1970

## Essential Information

MLS® #

A2210778



Price	\$219,000
Bathrooms	0.00
Acres	0.00
Year Built	1970
Type	Commercial
Sub-Type	Retail
Status	Active

### Community Information

Address	123 123 Street Se
Subdivision	Mayland
City	Calgary
County	Calgary
Province	Alberta
Postal Code	T2E 7V6

### Additional Information

Date Listed	April 10th, 2025
Days on Market	30

### Listing Details

Listing Office	Joyous Realty Inc.
----------------	--------------------

Data is supplied by Pillar 9â„¢ MLS® System. Pillar 9â„¢ is the owner of the copyright in its MLS® System. Data is deemed reliable but is not guaranteed accurate by Pillar 9â„¢. The trademarks MLS®, Multiple Listing Service® and the associated logos are owned by The Canadian Real Estate Association (CREA) and identify the quality of services provided by real estate professionals who are members of CREA. Used under license.