

\$399,900 - 76 Reeves Crescent, Red Deer

MLS® #A2211935

\$399,900

3 Bedroom, 3.00 Bathroom, 1,165 sqft
Residential on 0.16 Acres

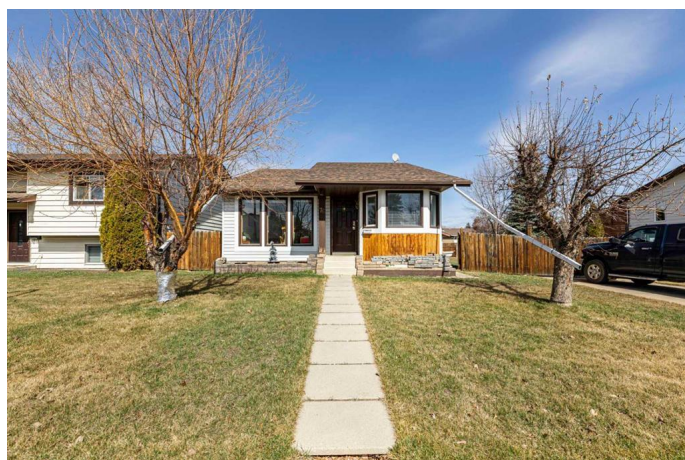
Rosedale Estates, Red Deer, Alberta

â€œVACANT QUICK POSSESSION
â€œOriginal Ownerâ€œ Exceptionally
Well-Maintained Home on a Massive Lot!
Welcome to this charming and lovingly
cared-for 4-Level Split, nestled on an
extra-large 88x116 lotâ€œperfect for your
dream garage, RV parking, or future
expansion plans! This home offers 3 finished
levels and features 3 spacious bedrooms and
2 full bathrooms on the upper level, A bright
main level with a welcoming kitchen and living
room and a cozy third level featuring a large
family room with a gas fireplace, a 3-piece
bathroom, and a laundry room
Recent upgrades include: NTI System
combination furnace/boiler/water heater
(approx. 3 years old)
Shingles on both house and garage (also
approx. 3 years old)
Pride of ownership shines throughout this solid
home. Whether you're looking to move in as-is
or dreaming of future upgrades, this property
offers incredible space, functionality, and
potential in a family-friendly neighborhood.

Built in 1982

Essential Information

MLS® #	A2211935
Price	\$399,900
Bedrooms	3
Bathrooms	3.00



Full Baths	3
Square Footage	1,165
Acres	0.16
Year Built	1982
Type	Residential
Sub-Type	Detached
Style	4 Level Split
Status	Active

Community Information

Address	76 Reeves Crescent
Subdivision	Rosedale Estates
City	Red Deer
County	Red Deer
Province	Alberta
Postal Code	T4P 2Y5

Amenities

Parking Spaces	2
Parking	Double Garage Detached, Parking Pad
# of Garages	2

Interior

Interior Features	No Animal Home, No Smoking Home, Vaulted Ceiling(s), Central Vacuum
Appliances	Dishwasher, Garage Control(s), Refrigerator, Washer/Dryer, Window Coverings, Electric Range
Heating	High Efficiency
Cooling	None
Fireplace	Yes
# of Fireplaces	1
Fireplaces	Family Room, Gas, None
Has Basement	Yes
Basement	See Remarks

Exterior

Exterior Features	None, Outdoor Grill
Lot Description	Back Lane, Landscaped, Wetlands
Roof	Asphalt Shingle

Construction	Stucco
Foundation	Poured Concrete

Additional Information

Date Listed	April 17th, 2025
Days on Market	111
Zoning	R1

Listing Details

Listing Office	RE/MAX real estate central alberta
----------------	------------------------------------

Data is supplied by Pillar 9â„¢ MLS® System. Pillar 9â„¢ is the owner of the copyright in its MLS® System. Data is deemed reliable but is not guaranteed accurate by Pillar 9â„¢. The trademarks MLS®, Multiple Listing Service® and the associated logos are owned by The Canadian Real Estate Association (CREA) and identify the quality of services provided by real estate professionals who are members of CREA. Used under license.