

\$429,900 - 11418 92b Street, Grande Prairie

MLS® #A2213507

\$429,900

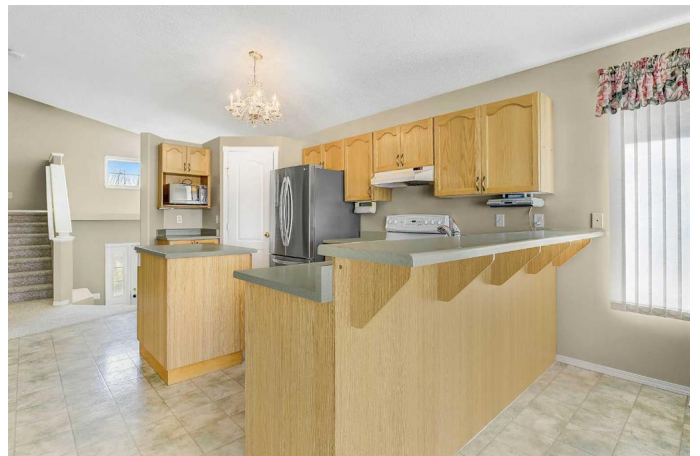
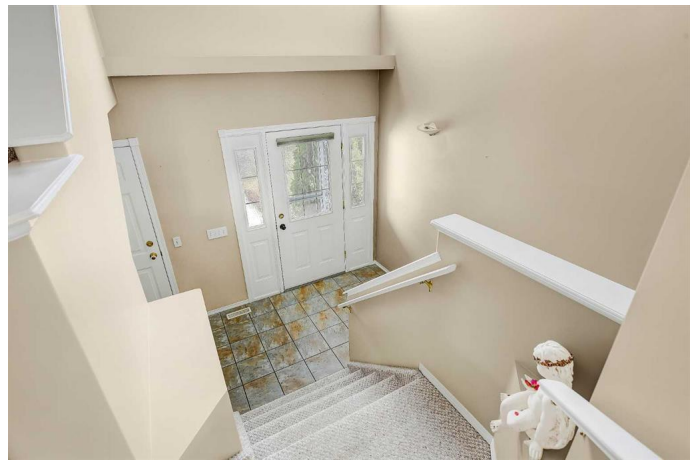
4 Bedroom, 3.00 Bathroom, 1,374 sqft

Residential on 0.10 Acres

Summit., Grande Prairie, Alberta

Welcome to this bright and cheery 1374 FULLY DEVELOPED modified bi-level in the desirable Summit area—lovingly maintained by its original owner and backing onto Crystal Park School with no rear neighbors! From the moment you step into the spacious, open foyer, you’ll notice the pride of ownership throughout. The kitchen offers an abundance of counter space, a convenient eating bar, and flows seamlessly into a large dining area filled with natural light. Just off the dining room, the living space features stunning floor-to-ceiling windows that overlook the backyard, creating a warm and inviting atmosphere. The expansive deck spans the width of the home, making it perfect for outdoor entertaining. On the main level, you'll find the generously sized primary bedroom complete with a private ensuite, while the upper level—situated over the garage—includes two additional bedrooms and a 3-piece bathroom, making it an ideal setup for families or guests. The fully finished basement is just as bright and welcoming, thanks to large windows, and includes a spacious rec room, extra bedrooms, another bathroom, and convenient laundry facilities. Additional highlights include newer shingles, a stainless steel fridge, ample parking, and a prime location in a family-friendly neighborhood—move-in ready and waiting for you to call it home!

Built in 1999



Essential Information

| | |
|----------------|-------------------|
| MLS® # | A2213507 |
| Price | \$429,900 |
| Bedrooms | 4 |
| Bathrooms | 3.00 |
| Full Baths | 3 |
| Square Footage | 1,374 |
| Acres | 0.10 |
| Year Built | 1999 |
| Type | Residential |
| Sub-Type | Detached |
| Style | Modified Bi-Level |
| Status | Active |

Community Information

| | |
|-------------|------------------|
| Address | 11418 92b Street |
| Subdivision | Summit. |
| City | Grande Prairie |
| County | Grande Prairie |
| Province | Alberta |
| Postal Code | T8V7E9 |

Amenities

| | |
|----------------|------------------------|
| Parking Spaces | 4 |
| Parking | Double Garage Attached |
| # of Garages | 420 |

Interior

| | |
|-------------------|----------------|
| Interior Features | See Remarks |
| Appliances | See Remarks |
| Heating | Forced Air |
| Cooling | None |
| Fireplace | Yes |
| # of Fireplaces | 1 |
| Fireplaces | Basement, Gas |
| Has Basement | Yes |
| Basement | Finished, Full |

Exterior

| | |
|-------------------|---|
| Exterior Features | Private Yard |
| Lot Description | Backs on to Park/Green Space, Irregular Lot |
| Roof | Asphalt Shingle |
| Construction | See Remarks |
| Foundation | Poured Concrete |

Additional Information

| | |
|----------------|------------------|
| Date Listed | April 21st, 2025 |
| Days on Market | 31 |
| Zoning | RS |

Listing Details

| | |
|----------------|---|
| Listing Office | Sutton Group Grande Prairie Professionals |
|----------------|---|

Data is supplied by Pillar 9â„¢ MLS® System. Pillar 9â„¢ is the owner of the copyright in its MLS® System. Data is deemed reliable but is not guaranteed accurate by Pillar 9â„¢. The trademarks MLS®, Multiple Listing Service® and the associated logos are owned by The Canadian Real Estate Association (CREA) and identify the quality of services provided by real estate professionals who are members of CREA. Used under license.