

\$499,000 - 1224 Patricia Street, Jasper

MLS® #A2214308

\$499,000

0 Bedroom, 0.00 Bathroom,
Land on 0.13 Acres

Jasper, Jasper, Alberta

This is an ideal lot to build your dream home on! Certificate of completion required to close the demolition permit to allow for Parks consent to transfer of Parks land lease. Great location backed onto Cabin Creek with gorgeous mountain views.

Essential Information

MLS® #	A2214308
Price	\$499,000
Bathrooms	0.00
Acres	0.13
Type	Land
Sub-Type	Residential Land
Status	Active

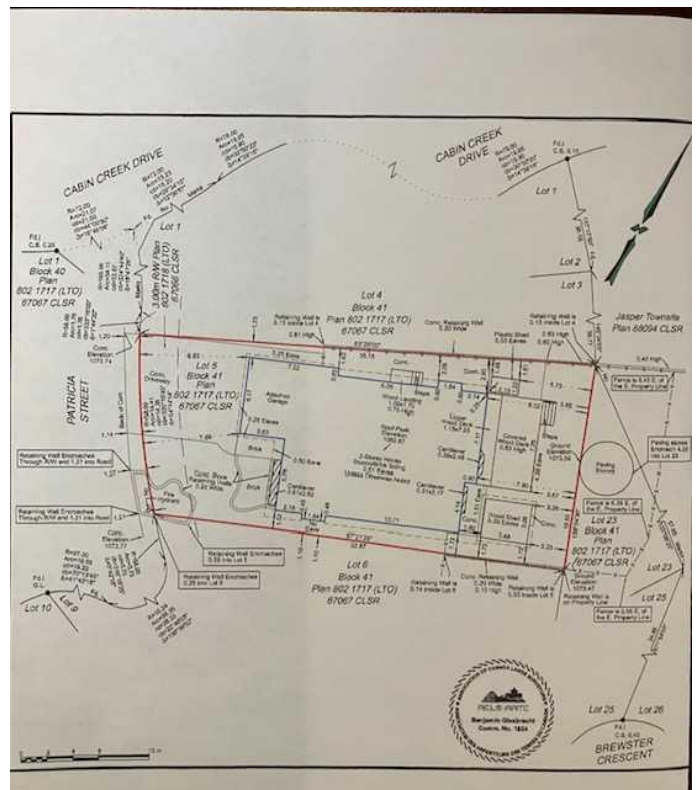
Community Information

Address	1224 Patricia Street
Subdivision	Jasper
City	Jasper
County	Jasper, Municipality
Province	Alberta
Postal Code	T0E 1E0

Additional Information

Date Listed	April 21st, 2025
Days on Market	29
Zoning	R1

Listing Details



Listing Office

ROYAL LEPAGE SUMMITVIEW REALTY

Data is supplied by Pillar 9â„¸ MLSÂ® System. Pillar 9â„¸ is the owner of the copyright in its MLSÂ® System. Data is deemed reliable but is not guaranteed accurate by Pillar 9â„¸. The trademarks MLSÂ®, Multiple Listing ServiceÂ® and the associated logos are owned by The Canadian Real Estate Association (CREA) and identify the quality of services provided by real estate professionals who are members of CREA. Used under license.