

\$296,900 - 3513 Forestry Avenue S, Lethbridge

MLS® #A2215028

\$296,900

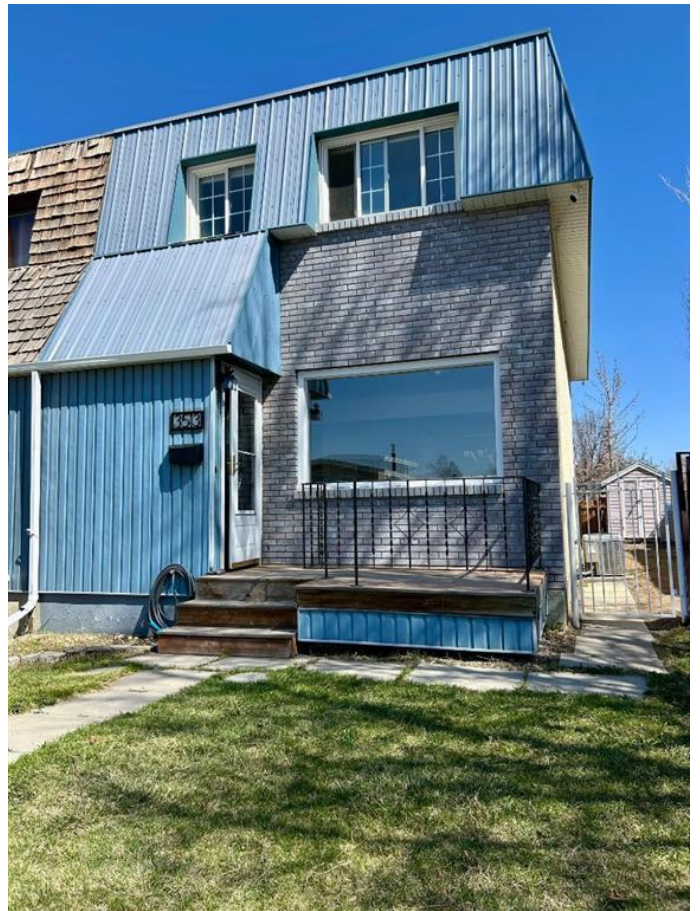
3 Bedroom, 2.00 Bathroom, 1,028 sqft

Residential on 0.07 Acres

Redwood, Lethbridge, Alberta

Come, check out this nicely renovated END UNIT! Three bedrooms up with updated bathroom, a totally updated main floor, including kitchen, layout, cabinets, granite, countertop, paint, and more! You will love the fact that there are no condo fees! You also have a private yard, with extra parking out back! Located in an excellent southside neighbourhood close to many main amenities! Donâ€™t forget about the central air conditioning, and a full basement waiting for your finishing touches!

Built in 1971



Essential Information

MLS® #	A2215028
Price	\$296,900
Bedrooms	3
Bathrooms	2.00
Full Baths	1
Half Baths	1
Square Footage	1,028
Acres	0.07
Year Built	1971
Type	Residential
Sub-Type	Row/Townhouse
Style	Townhouse
Status	Active

Community Information

Address	3513 Forestry Avenue S
Subdivision	Redwood
City	Lethbridge
County	Lethbridge
Province	Alberta
Postal Code	T1K 3L2

Amenities

Parking Spaces	3
Parking	Off Street

Interior

Interior Features	See Remarks
Appliances	Central Air Conditioner, Washer/Dryer
Heating	Forced Air
Cooling	Central Air
Has Basement	Yes
Basement	Full, Partially Finished, Unfinished

Exterior

Exterior Features	Other
Lot Description	Back Lane, Back Yard
Roof	Asphalt Shingle
Construction	Concrete
Foundation	Poured Concrete

Additional Information

Date Listed	April 25th, 2025
Days on Market	20
Zoning	R-60

Listing Details

Listing Office	Maxwell Capital Realty - Lethbridge
----------------	-------------------------------------

Data is supplied by Pillar 9â„¢ MLSÂ® System. Pillar 9â„¢ is the owner of the copyright in its MLSÂ® System. Data is deemed reliable but is not guaranteed accurate by Pillar 9â„¢. The trademarks MLSÂ®, Multiple Listing ServiceÂ® and the associated logos are owned by The Canadian Real Estate Association (CREA) and identify the quality of services provided by real estate professionals who are members of CREA. Used under license.

