

# \$249,900 - Lot #1, Rural Cardston County

MLS® #A2217507

**\$249,900**

0 Bedroom, 0.00 Bathroom,  
Land on 3.01 Acres

NONE, Rural Cardston County, Alberta

3.01 acres with drilled registered well AT 52ft and delivers 2.5GPM. Lot 1 in Heritage Ranch subdivision is your opportunity to re-connect with mother nature! This property is waiting and ready for the new owners creative vision for development. Chief Mountain and the beautiful Canadian rocky mountains as your back drop. Just a short drive to Waterton Lakes National Park. South West of Cardston. Close to Police Outpost Provincial Park and Lee Creek. This is truly a piece of Paradise!



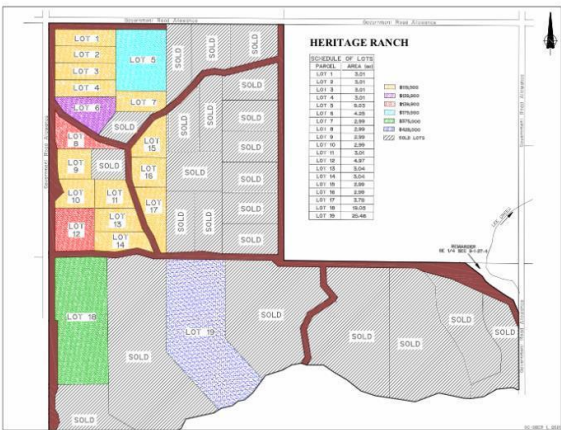
## Essential Information

MLS® #	A2217507
Price	\$249,900
Bathrooms	0.00
Acres	3.01
Type	Land
Sub-Type	Residential Land
Status	Active

## Community Information

Address	Lot #1
Subdivision	NONE
City	Rural Cardston County
County	Cardston County
Province	Alberta
Postal Code	T0K0K0

## Additional Information



Date Listed	May 2nd, 2025
Days on Market	116
Zoning	GRC

### **Listing Details**

Listing Office	RE/MAX REAL ESTATE - LETHBRIDGE
----------------	---------------------------------

Data is supplied by Pillar 9â„¢ MLS® System. Pillar 9â„¢ is the owner of the copyright in its MLS® System. Data is deemed reliable but is not guaranteed accurate by Pillar 9â„¢. The trademarks MLS®, Multiple Listing Service® and the associated logos are owned by The Canadian Real Estate Association (CREA) and identify the quality of services provided by real estate professionals who are members of CREA. Used under license.