

# \$617,000 - 5 Park Drive, Whitecourt

MLS® #A2217818

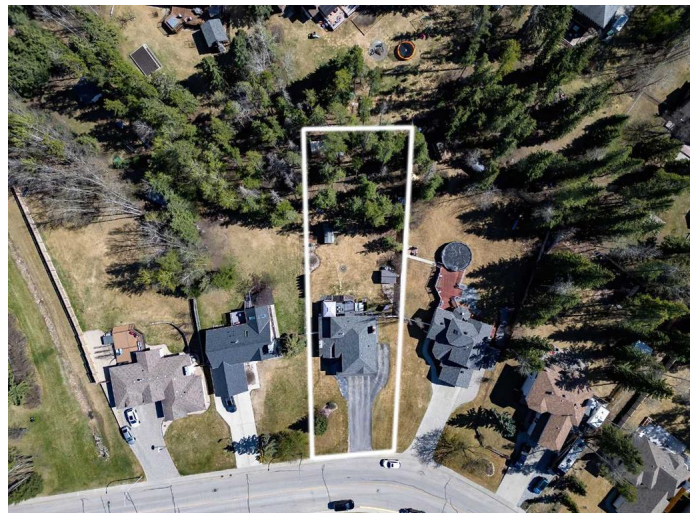
**\$617,000**

5 Bedroom, 4.00 Bathroom, 2,244 sqft

Residential on 0.49 Acres

NONE, Whitecourt, Alberta

Stunning Two-Storey Home on a Park Lot in Whitecourt – Fully Finished with Premium Features! Welcome to this exceptional two-storey home perfectly positioned on a park lot in one of Whitecourt’s most sought-after neighborhoods. This home offers unmatched privacy and a true connection to nature – right from your backyard. Inside, the main floor boasts a bright, open-concept layout filled with natural light and high-quality finishes. The heart of the home is the main living room, featuring a cozy gas fireplace, perfect for relaxing evenings. A second living room on the main level adds flexibility and charm, highlighted by a traditional wood-burning fireplace – a warm and welcoming space for gatherings, reading, or enjoying a quiet fire on winter nights. The well-appointed kitchen offers ample cabinetry and counter space, and the dining area opens directly to the backyard deck for effortless indoor-outdoor living. You’ll also appreciate the main floor laundry and the large driveway with RV parking. Upstairs, retreat to a spacious primary suite complete with a walk-in closet and a stunning ensuite finished with Italian-imported tile. Three additional upper-level bedrooms offer comfortable space for family or guests. The fully finished basement expands your living space with two more bedrooms, a full bathroom, and a generous family room with a second gas fireplace – ideal for movie nights or entertaining. Step outside to your private



backyard retreat, featuring a large deck with gas hookups, a relaxing hot tub, and views of the lush parkland behind. Itâ€™s the perfect space to unwind, host summer BBQs, or enjoy peaceful evenings. Located in a quiet, family-friendly area close to schools, parks, and amenities, this feature-packed home combines comfort, functionality, and an unbeatable location. Donâ€™t miss this rare opportunity to make this park-side beauty yours!

Built in 1990

**Essential Information**

MLS® #	A2217818
Price	\$617,000
Bedrooms	5
Bathrooms	4.00
Full Baths	3
Half Baths	1
Square Footage	2,244
Acres	0.49
Year Built	1990
Type	Residential
Sub-Type	Detached
Style	2 Storey
Status	Active

**Community Information**

Address	5 Park Drive
Subdivision	NONE
City	Whitecourt
County	Woodlands County
Province	Alberta
Postal Code	T7S 1H8

**Amenities**

Parking Spaces	6
Parking	Double Garage Attached, RV Access/Parking

# of Garages 2

## Interior

Interior Features Built-in Features

Appliances Central Air Conditioner, Dishwasher, Garage Control(s), Microwave Hood Fan, Refrigerator, Stove(s), Washer/Dryer, Window Coverings

Heating Forced Air

Cooling Central Air

Fireplace Yes

# of Fireplaces 3

Fireplaces Gas, Wood Burning

Has Basement Yes

Basement Finished, Full

## Exterior

Exterior Features Other

Lot Description Irregular Lot

Roof Asphalt Shingle

Construction Stucco

Foundation Poured Concrete

## Additional Information

Date Listed May 6th, 2025

Zoning R-1A

## Listing Details

Listing Office RE/MAX ADVANTAGE (WHITECOURT)

Data is supplied by Pillar 9â„¢ MLSÂ® System. Pillar 9â„¢ is the owner of the copyright in its MLSÂ® System. Data is deemed reliable but is not guaranteed accurate by Pillar 9â„¢. The trademarks MLSÂ®, Multiple Listing ServiceÂ® and the associated logos are owned by The Canadian Real Estate Association (CREA) and identify the quality of services provided by real estate professionals who are members of CREA. Used under license.