

\$498,000 - 3242 30a Avenue Se, Calgary

MLS® #A2219489

\$498,000

3 Bedroom, 2.00 Bathroom, 1,132 sqft
Residential on 0.13 Acres

Dover, Calgary, Alberta

This spacious 3 bedrooms bungalow, large living, bright kitchen, 1 full bath on main floor, huge over size double detached heated garage, a dream for car mechanic guy, seperate entrance to basement, partial developed basement with 1 full bath, laundry room, lots of room for future development to your needs. Close by bus, park, bikepath, shopping, school.

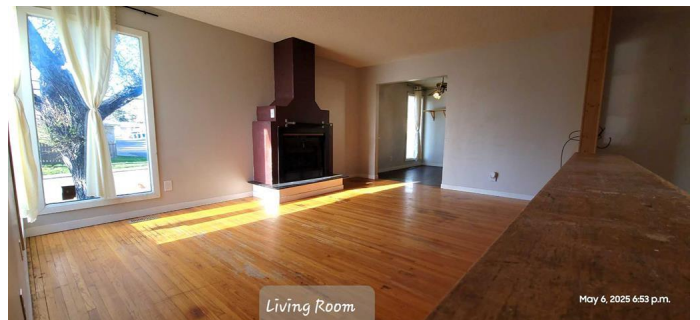
Built in 1970

Essential Information

MLS® #	A2219489
Price	\$498,000
Bedrooms	3
Bathrooms	2.00
Full Baths	2
Square Footage	1,132
Acres	0.13
Year Built	1970
Type	Residential
Sub-Type	Detached
Style	Bungalow
Status	Active

Community Information

Address	3242 30a Avenue Se
Subdivision	Dover
City	Calgary



County	Calgary
Province	Alberta
Postal Code	T2B 0H4

Amenities

Parking Spaces	2
Parking	Double Garage Detached, Heated Garage, RV Carport
# of Garages	2

Interior

Interior Features	Separate Entrance
Appliances	Dryer, Electric Range, Electric Stove, Refrigerator, Washer
Heating	Central, Forced Air, Natural Gas
Cooling	None
Fireplace	Yes
# of Fireplaces	1
Fireplaces	Gas
Has Basement	Yes
Basement	Full, Partially Finished

Exterior

Exterior Features	Private Yard
Lot Description	Back Lane, Back Yard, Paved, Rectangular Lot
Roof	Asphalt Shingle
Construction	Stucco, Wood Frame, Wood Siding
Foundation	Poured Concrete

Additional Information

Date Listed	May 8th, 2025
Days on Market	9
Zoning	R-CG

Listing Details

Listing Office	URBAN-REALTY.ca
----------------	-----------------

Data is supplied by Pillar 9â„¢ MLS® System. Pillar 9â„¢ is the owner of the copyright in its MLS® System. Data is deemed reliable but is not guaranteed accurate by Pillar 9â„¢. The trademarks MLS®, Multiple Listing Service® and the associated logos are owned by The Canadian Real Estate Association (CREA) and identify the quality of services provided by real estate professionals who are members of CREA. Used under license.