

\$289,900 - 63 Range, Rural Grande Prairie No. 1, County of

MLS® #A2219701

\$289,900

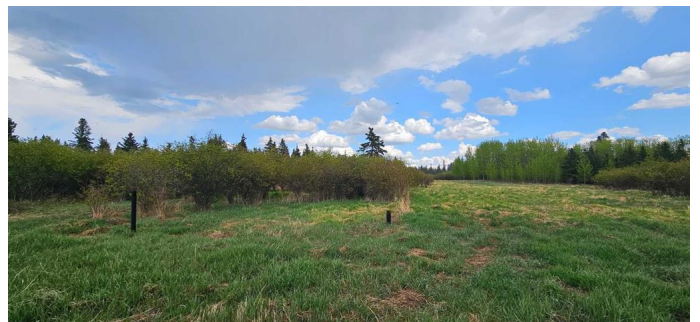
0 Bedroom, 0.00 Bathroom,
Land on 6.00 Acres

NONE, Rural Grande Prairie No. 1, County of,
Alberta

Located in the heart of the Saddle Hills, this picturesque 6-acre treed parcel offers privacy, natural beauty, and room to grow. Surrounded by mature trees with a large open area in the center, this property is perfectly set up for building your dream home – offering both seclusion and space in one ideal location.

Zoned CR5, this acreage is full of potential. Whether you're planning a peaceful country residence, a hobby farm, or a home-based business, the options are wide open. Raise animals, grow your own food, or simply enjoy the quiet charm of rural living with flexibility for future plans.

This is a rare opportunity to own a private, usable piece of land with endless possibilities in Northern Alberta. Take the first step toward your country lifestyle today.



Essential Information

MLS® #	A2219701
Price	\$289,900
Bathrooms	0.00
Acres	6.00
Type	Land
Sub-Type	Residential Land

Status	Active
--------	--------

Community Information

Address	63 Range
Subdivision	NONE
City	Rural Grande Prairie No. 1, County of
County	Grande Prairie No. 1, County of
Province	Alberta
Postal Code	T8W 3C0

Additional Information

Date Listed	May 20th, 2025
Days on Market	99
Zoning	CR5

Listing Details

Listing Office	Grassroots Realty Group Ltd.
----------------	------------------------------

Data is supplied by Pillar 9â„¢ MLS® System. Pillar 9â„¢ is the owner of the copyright in its MLS® System. Data is deemed reliable but is not guaranteed accurate by Pillar 9â„¢. The trademarks MLS®, Multiple Listing Service® and the associated logos are owned by The Canadian Real Estate Association (CREA) and identify the quality of services provided by real estate professionals who are members of CREA. Used under license.