

\$344,900 - 121 Malcolm Bay, Fort McMurray

MLS® #A2222088

\$344,900

3 Bedroom, 2.00 Bathroom, 1,437 sqft
Residential on 0.15 Acres

Timberlea, Fort McMurray, Alberta

WOW! Welcome to 121 Malcolm Bay, a 1430+sqft home with a 29'x23' DETACHED GARAGE + RV Parking and just steps from the greenspace. This well maintained home offers THREE bedrooms, 2 bathrooms, central air conditioning, new hot water tank, a gas fireplace and a great layout. Outside you will find an oversized driveway, RV parking, huge garage plus a 6300+sqft pie-shaped lot. All of this in a great Timberlea location and priced to sell, book your private tour today!

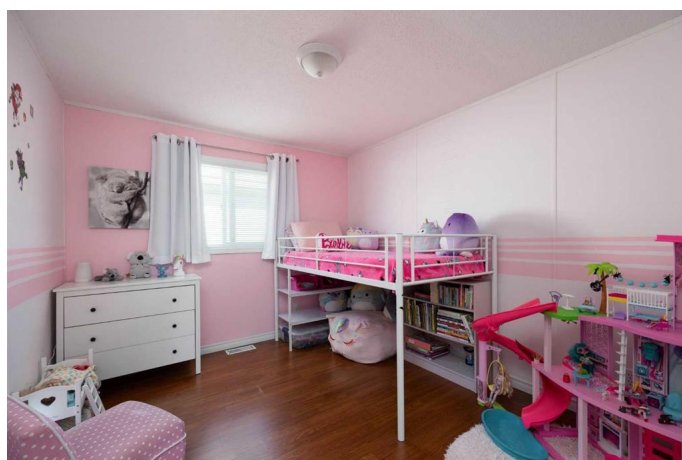
Built in 2003

Essential Information

MLS® #	A2222088
Price	\$344,900
Bedrooms	3
Bathrooms	2.00
Full Baths	2
Square Footage	1,437
Acres	0.15
Year Built	2003
Type	Residential
Sub-Type	Detached
Style	Modular Home
Status	Active

Community Information

Address	121 Malcolm Bay
Subdivision	Timberlea



City	Fort McMurray
County	Wood Buffalo
Province	Alberta
Postal Code	T9K 2M9

Amenities

Amenities	None
Parking Spaces	6
Parking	Double Garage Detached
# of Garages	2

Interior

Interior Features	Built-in Features, Ceiling Fan(s), Closet Organizers
Appliances	See Remarks
Heating	Central
Cooling	Central Air
Fireplace	Yes
# of Fireplaces	1
Fireplaces	Gas, Living Room
Basement	None

Exterior

Exterior Features	None
Lot Description	Landscaped, Lawn, Level, Pie Shaped Lot
Roof	Asphalt Shingle
Construction	Mixed
Foundation	Piling(s)

Additional Information

Date Listed	May 16th, 2025
Days on Market	40
Zoning	RMH-1

Listing Details

Listing Office	EXP REALTY
----------------	------------

Data is supplied by Pillar 9â„¢ MLSÂ® System. Pillar 9â„¢ is the owner of the copyright in its MLSÂ® System. Data is deemed reliable but is not guaranteed accurate by Pillar 9â„¢. The trademarks MLSÂ®, Multiple Listing ServiceÂ® and the associated logos are owned by The Canadian Real Estate Association (CREA) and identify the quality of services provided by real estate professionals who are members of CREA. Used under license.