

\$89,000 - Lot 8 On 31b And Rr 242, Rural Cardston County

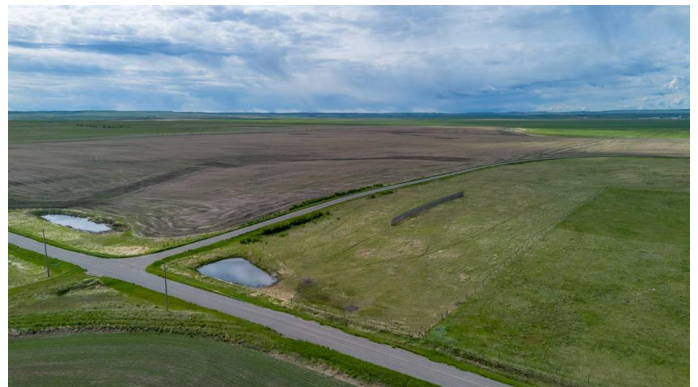
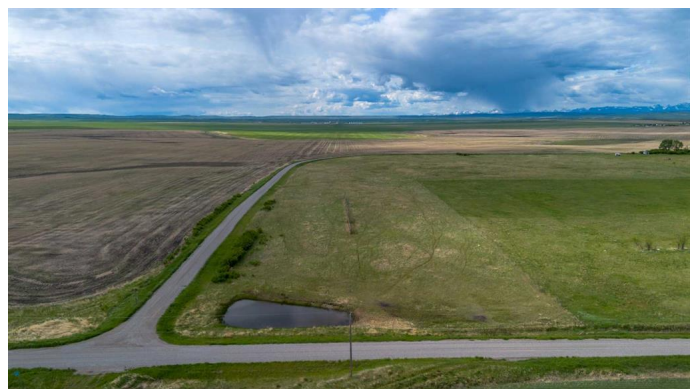
MLS® #A2224174

\$89,000

0 Bedroom, 0.00 Bathroom,
Land on 3.60 Acres

NONE, Rural Cardston County, Alberta

Looking for your own slice of heaven? This stunning acreage nestled between Spring Coulee and Cardston offers the perfect retreat from the hustle and bustle of city life! Whether you're dreaming of building your family home, in need of extra pastureland, or looking for a spot to enjoy weekend getaways, this property is full of potential. With sweeping prairie views and a close proximity to the majestic Rocky Mountains, you'll enjoy peace, privacy, and endless skies. Only 45 minutes from the city of Lethbridge, yet a world away in serenity. Outdoor enthusiasts will love being near Waterton Lakes National Park, with quick access to fishing, hunting, and countless recreational opportunities! The dug out on this lot is a fantastic feature as it is the only open water on the block! It would be fantastic for watering horses or other animals, irrigating the land, or just turning into a landscaped water feature! If you're looking for tranquility, beauty, and opportunity all in one, this is it. Call your REALTOR® and go take a look today!



Essential Information

MLS® #	A2224174
Price	\$89,000
Bathrooms	0.00
Acres	3.60

Type	Land
Sub-Type	Residential Land
Status	Active

Community Information

Address	Lot 8 On 31b And Rr 242
Subdivision	NONE
City	Rural Cardston County
County	Cardston County
Province	Alberta
Postal Code	T0K 0K0

Additional Information

Date Listed	June 6th, 2025
Days on Market	31
Zoning	CR

Listing Details

Listing Office	Grassroots Realty Group
----------------	-------------------------

Data is supplied by Pillar 9â„¢ MLS® System. Pillar 9â„¢ is the owner of the copyright in its MLS® System. Data is deemed reliable but is not guaranteed accurate by Pillar 9â„¢. The trademarks MLS®, Multiple Listing Service® and the associated logos are owned by The Canadian Real Estate Association (CREA) and identify the quality of services provided by real estate professionals who are members of CREA. Used under license.