

\$499,900 - 256 Augustus Way, Penhold

MLS® #A2226265

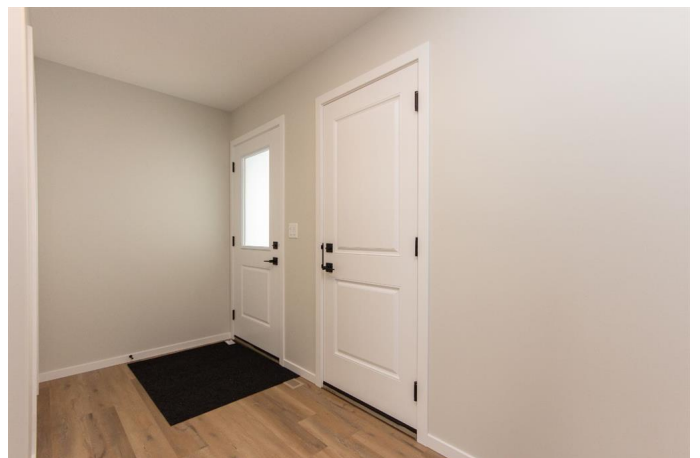
\$499,900

3 Bedroom, 3.00 Bathroom, 1,707 sqft

Residential on 0.12 Acres

Palisades, Penhold, Alberta

BRAND NEW CONSTRUCTION | SEPTEMBER POSSESSION The Palisades in Penhold is ideally situated on a large park reserve with playgrounds, schools, and beautiful walking paths! This stylish Paxton two storey floor plan offers a wide open living space, large windows, 2nd floor laundry, and a large bonus room! The main floor features vinyl plank flooring throughout, and a beautiful two tone kitchen with quartz counter tops, stainless steel appliances, a large island with eating bar, and a large walk in pantry. The adjacent dining area offers access to the back deck through large sliding patio doors. Head upstairs to find two nicely sized kids/spare rooms that share a large 4 pce bath, and a large master bedroom with its own private 4 pce ensuite and huge walk in closet. The laundry room is large and bright, and the spacious bonus room gives you additional living space to enjoy. If you need more space, the builder can complete the basement development to their spec plan or your own custom design! Allowances for blinds and a washer & dryer can also be included at an extra cost to make this a fully move in ready home. Poured concrete driveway, front sod, and rear topsoil to grade are included and will be completed as weather permits. GST is already included in the purchase price. Live worry free thanks to a full 1 year builder warranty and a 10 year Alberta New Home Warranty. Taxes have yet to be assessed. This home has an estimated completion date



of September 2025. Photos and renderings are examples from a similar home built previously and do not necessarily reflect finished and colours used in this home.

Built in 2025

Essential Information

| | |
|----------------|-------------|
| MLS® # | A2226265 |
| Price | \$499,900 |
| Bedrooms | 3 |
| Bathrooms | 3.00 |
| Full Baths | 2 |
| Half Baths | 1 |
| Square Footage | 1,707 |
| Acres | 0.12 |
| Year Built | 2025 |
| Type | Residential |
| Sub-Type | Detached |
| Style | 2 Storey |
| Status | Active |

Community Information

| | |
|-------------|------------------|
| Address | 256 Augustus Way |
| Subdivision | Palisades |
| City | Penhold |
| County | Red Deer County |
| Province | Alberta |
| Postal Code | T0M 1R0 |

Amenities

| | |
|----------------|-------------------------------------------------------|
| Parking Spaces | 4 |
| Parking | Concrete Driveway, Double Garage Attached, Off Street |
| # of Garages | 2 |

Interior

| | |
|-------------------|---------------------------------------------------------------------------------------------------------------------------------------------------------------------------|
| Interior Features | Breakfast Bar, Closet Organizers, Kitchen Island, No Animal Home, No Smoking Home, Open Floorplan, Pantry, Quartz Counters, Separate Entrance, Storage, Walk-In Closet(s) |
|-------------------|---------------------------------------------------------------------------------------------------------------------------------------------------------------------------|

| | |
|--------------|---------------------------------------------------------------------------|
| Appliances | Dishwasher, Garage Control(s), Microwave Hood Fan, Refrigerator, Stove(s) |
| Heating | Forced Air, Natural Gas |
| Cooling | None |
| Has Basement | Yes |
| Basement | Full, Unfinished |

Exterior

| | |
|-------------------|-----------------------------------------------------------------|
| Exterior Features | Private Entrance, Private Yard |
| Lot Description | Back Lane, Back Yard, Front Yard, Interior Lot, Rectangular Lot |
| Roof | Asphalt Shingle |
| Construction | Concrete, Stone, Vinyl Siding, Wood Frame |
| Foundation | Poured Concrete |

Additional Information

| | |
|----------------|----------------|
| Date Listed | June 4th, 2025 |
| Days on Market | 104 |
| Zoning | R1-A |

Listing Details

| | |
|----------------|------------------------------------|
| Listing Office | RE/MAX real estate central alberta |
|----------------|------------------------------------|

Data is supplied by Pillar 9â„¢ MLS® System. Pillar 9â„¢ is the owner of the copyright in its MLS® System. Data is deemed reliable but is not guaranteed accurate by Pillar 9â„¢. The trademarks MLS®, Multiple Listing Service® and the associated logos are owned by The Canadian Real Estate Association (CREA) and identify the quality of services provided by real estate professionals who are members of CREA. Used under license.