

\$125,000 - 104, 7164 Parke Avenue, Red Deer

MLS® #A2226926

\$125,000

2 Bedroom, 1.00 Bathroom, 772 sqft

Residential on 0.00 Acres

Pines, Red Deer, Alberta

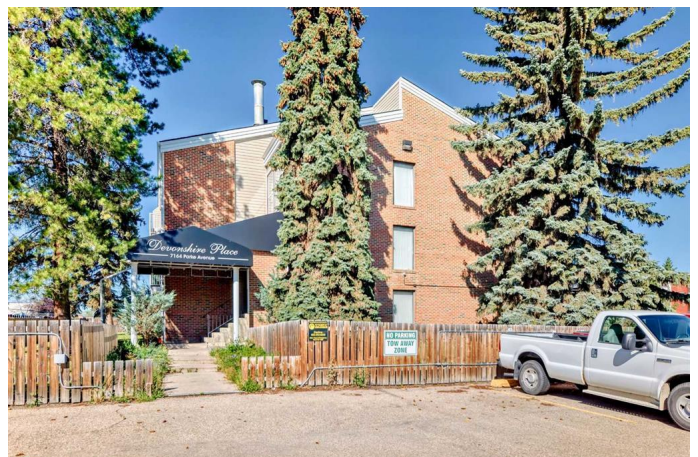
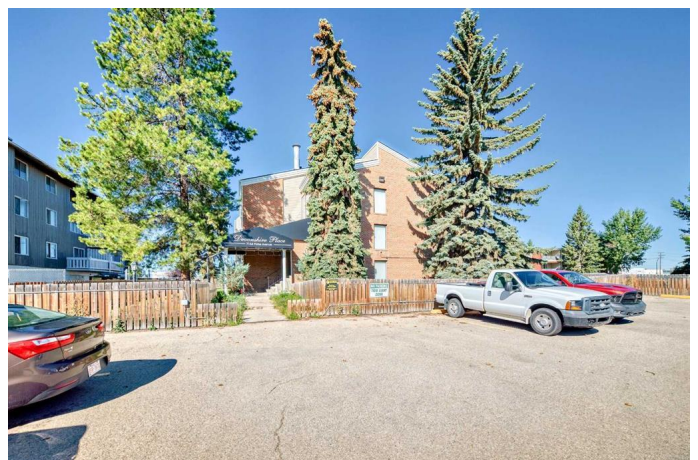
Central location in the Pines with all utilities included in the condo fees! This clean and freshly painted 2 bedroom main floor unit features in-suite laundry with storage, ensuring convenience and comfort. Say goodbye to surprise utility bills! Power, Gas, Water, Sewer, and Garbage are all covered. Enjoy assigned parking and plenty of space for visitor parking. Relax on your private patio. The complex is partially fenced and professionally managed, with security cameras for added peace of mind. Rentals are allowed, pets with restrictions. Walking distance to all amenities.

Built in 1976

Essential Information

MLS® #	A2226926
Price	\$125,000
Bedrooms	2
Bathrooms	1.00
Full Baths	1
Square Footage	772
Acres	0.00
Year Built	1976
Type	Residential
Sub-Type	Apartment
Style	Multi Level Unit
Status	Active

Community Information



Address	104, 7164 Parke Avenue
Subdivision	Pines
City	Red Deer
County	Red Deer
Province	Alberta
Postal Code	T4P1M9

Amenities

Parking Spaces	2
Parking	Off Street, Stall

Interior

Interior Features	No Animal Home, No Smoking Home
Appliances	Dishwasher, Electric Stove, Refrigerator, Washer/Dryer, Window Coverings
Heating	Baseboard
Cooling	None
# of Stories	4

Exterior

Exterior Features	Other
Roof	Asphalt Shingle
Construction	Wood Frame

Additional Information

Date Listed	August 21st, 2025
Days on Market	1
Zoning	R-H

Listing Details

Listing Office	Century 21 Advantage
----------------	----------------------

Data is supplied by Pillar 9â„¢ MLS® System. Pillar 9â„¢ is the owner of the copyright in its MLS® System. Data is deemed reliable but is not guaranteed accurate by Pillar 9â„¢. The trademarks MLS®, Multiple Listing Service® and the associated logos are owned by The Canadian Real Estate Association (CREA) and identify the quality of services provided by real estate professionals who are members of CREA. Used under license.