

\$339,900 - 8814 65 Avenue, Grande Prairie

MLS® #A2227343

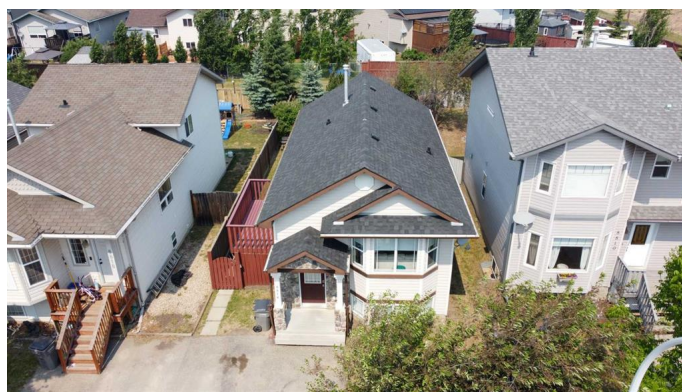
\$339,900

4 Bedroom, 2.00 Bathroom, 836 sqft

Residential on 0.09 Acres

Countryside South., Grande Prairie, Alberta

This spacious and well-maintained 4bed 2 bath bi-level home in Countryside South offers an excellent opportunity for first-time home buyers seeking a move-in ready property in a family-friendly neighborhood-BONUS BRAND NEW SHINGLES INSTALLED JUNE 8TH!. Featuring four bedrooms and two bathrooms, this home boasts a fantastic layout with a fully developed basement, providing plenty of room for family and guests. Recent updates include a new hot water tank and dryer completed in 2022, and a brand-new roof ensuring peace of mind for years to come. The large, fully fenced yard backs onto an easement for added privacy with no rear neighbors, making it ideal for outdoor activities, pets, and family gatherings. Additional highlights include a spacious deck, a handy storage shed, and a great location close to parks, schools, and amenities. This home is ready for you to move in and start creating memoriesâ€™donâ€™t miss your chance to own in this desirable area.



Built in 2005

Essential Information

MLS® #	A2227343
Price	\$339,900
Bedrooms	4
Bathrooms	2.00
Full Baths	2
Square Footage	836

Acres	0.09
Year Built	2005
Type	Residential
Sub-Type	Detached
Style	Bi-Level
Status	Active

Community Information

Address	8814 65 Avenue
Subdivision	Countryside South.
City	Grande Prairie
County	Grande Prairie
Province	Alberta
Postal Code	T8W 2X5

Amenities

Parking Spaces	2
Parking	Parking Pad
# of Garages	2

Interior

Interior Features	See Remarks
Appliances	Dishwasher, Electric Stove, Refrigerator, Washer/Dryer
Heating	Forced Air
Cooling	None
Has Basement	Yes
Basement	Finished, Full

Exterior

Exterior Features	None
Lot Description	Backs on to Park/Green Space
Roof	Asphalt Shingle
Construction	Concrete, Stone, Vinyl Siding
Foundation	Poured Concrete

Additional Information

Date Listed	June 3rd, 2025
Days on Market	33
Zoning	RS

Listing Details

Listing Office Sutton Group Grande Prairie Professionals

Data is supplied by Pillar 9â„¢ MLS® System. Pillar 9â„¢ is the owner of the copyright in its MLS® System. Data is deemed reliable but is not guaranteed accurate by Pillar 9â„¢. The trademarks MLS®, Multiple Listing Service® and the associated logos are owned by The Canadian Real Estate Association (CREA) and identify the quality of services provided by real estate professionals who are members of CREA. Used under license.