

\$159,900 - 23, 3440 23 Avenue S, Lethbridge

MLS® #A2227399

\$159,900

1 Bedroom, 1.00 Bathroom, 681 sqft

Residential on 0.00 Acres

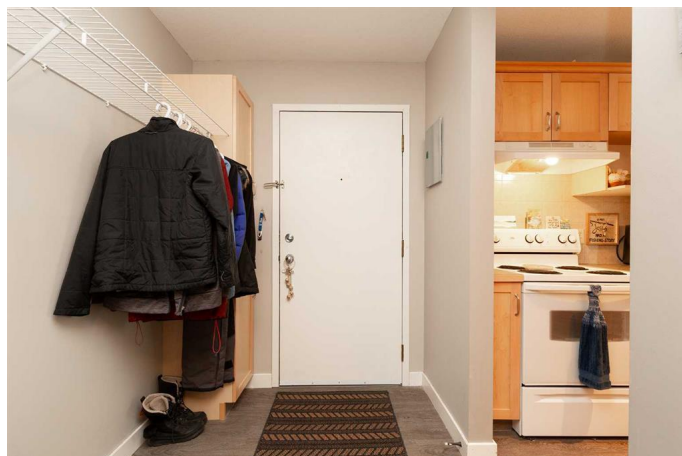
Redwood, Lethbridge, Alberta

Welcome to Spruce Manor! This fantastic 1 bedroom 1 bathroom condo has been kept up and renovated over the years. The updated kitchen provides the perfect amount of space for the home cook and open into the spacious dining room. The living room can accommodate all your furniture and leads to the private balcony with views of the beautifully maintained condo grounds. This location cannot be beat, with quick and easy access to parks, shopping, groceries, pharmacy, restaurants, and close to Lethbridge Polytechnic. Assigned parking, on-site heated storage unit, and dollar laundry services are all part of Spruce Manor's amenities. You can sell your snow shovel and lawnmower and live in this maintenance free condo for less than \$160,000.

Built in 1980

Essential Information

MLS® #	A2227399
Price	\$159,900
Bedrooms	1
Bathrooms	1.00
Full Baths	1
Square Footage	681
Acres	0.00
Year Built	1980
Type	Residential



Sub-Type	Apartment
Style	Multi Level Unit
Status	Active

Community Information

Address	23, 3440 23 Avenue S
Subdivision	Redwood
City	Lethbridge
County	Lethbridge
Province	Alberta
Postal Code	T1K 4K4

Amenities

Amenities	Parking, Laundry
Parking Spaces	1
Parking	Stall

Interior

Interior Features	Storage
Appliances	See Remarks
Heating	Baseboard
Cooling	None
# of Stories	3

Exterior

Exterior Features	None
Roof	Asphalt
Construction	Brick

Additional Information

Date Listed	June 3rd, 2025
Days on Market	10
Zoning	R-50

Listing Details

Listing Office	Lethbridge Real Estate.com
----------------	----------------------------

Data is supplied by Pillar 9â„¢ MLS® System. Pillar 9â„¢ is the owner of the copyright in its MLS® System. Data is deemed reliable but is not guaranteed accurate by Pillar 9â„¢. The trademarks MLS®, Multiple Listing Service® and the associated logos are owned by The Canadian Real Estate Association (CREA) and identify the quality of services provided by real estate professionals who are members of CREA. Used under license.