

\$129,900 - 3-1-2121458 242a Range, Rural Birch Hills County

MLS® #A2229178

\$129,900

0 Bedroom, 0.00 Bathroom,
Land on 2.89 Acres

NONE, Rural Birch Hills County, Alberta

River Front Property Located on the Smoky River Just Northeast of Watino. This is your chance to own your own piece of land next to a river that you would be able to enjoy as well. Don't let this chance slip away call today.

Essential Information

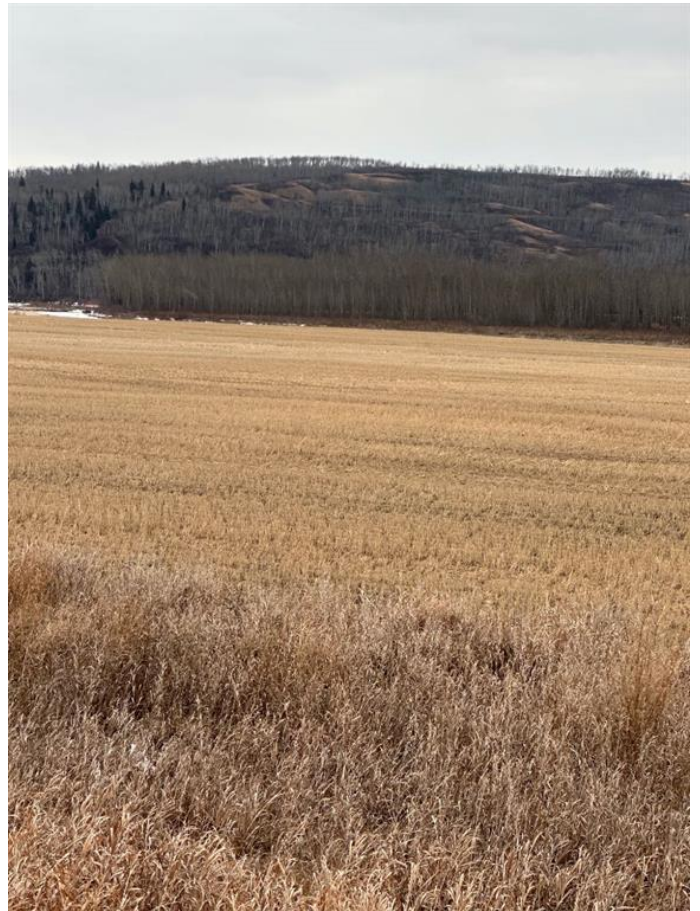
MLS® #	A2229178
Price	\$129,900
Bathrooms	0.00
Acres	2.89
Type	Land
Sub-Type	Residential Land
Status	Active

Community Information

Address	3-1-2121458 242a Range
Subdivision	NONE
City	Rural Birch Hills County
County	Birch Hills County
Province	Alberta
Postal Code	T0H3R0

Additional Information

Date Listed	June 9th, 2025
Days on Market	83
Zoning	A



Listing Details

Listing Office Royal LePage Valley Realty

Data is supplied by Pillar 9â,,ç MLSÂ® System. Pillar 9â,,ç is the owner of the copyright in its MLSÂ® System. Data is deemed reliable but is not guaranteed accurate by Pillar 9â,,ç. The trademarks MLSÂ®, Multiple Listing ServiceÂ® and the associated logos are owned by The Canadian Real Estate Association (CREA) and identify the quality of services provided by real estate professionals who are members of CREA. Used under license.