

\$330,000 - 1138 42 Avenue N, Lethbridge

MLS® #A2229638

\$330,000

2 Bedroom, 1.00 Bathroom, 950 sqft

Residential on 0.13 Acres

Legacy Ridge / Hardieville, Lethbridge, Alberta

Every mans dream is this 950 square foot house and a 28 foot by 30 foot 840 square foot shop. The house is a cute little 2 bedroom one bathroom ranch style house that has all the big ticket items replaced such as roof, furnace, central air, hot water. This corner lot boasts a lot of parking. The garage will make any car enthusiast happy with the 12 foot ceilings and a 2 post car hoist. call your favorite realtor today to book a viewing.

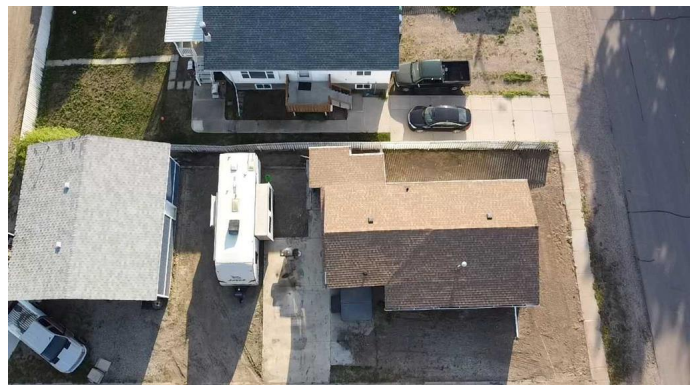
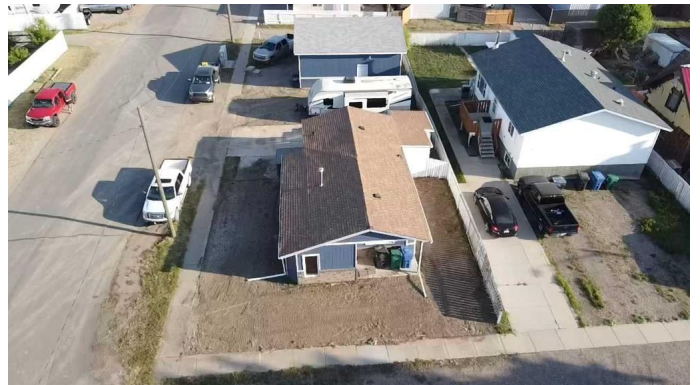
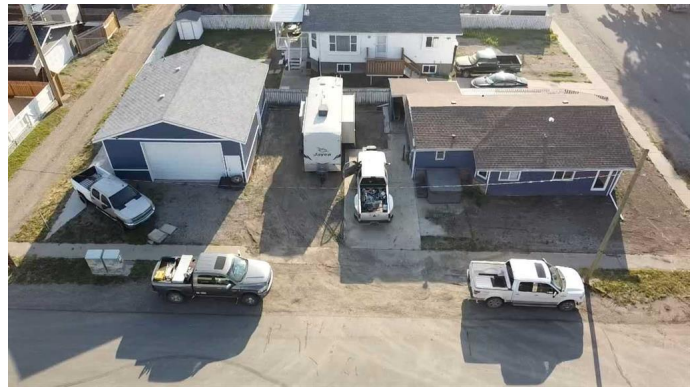
Built in 1965

Essential Information

MLS® #	A2229638
Price	\$330,000
Bedrooms	2
Bathrooms	1.00
Full Baths	1
Square Footage	950
Acres	0.13
Year Built	1965
Type	Residential
Sub-Type	Detached
Style	Bungalow
Status	Active

Community Information

Address	1138 42 Avenue N
Subdivision	Legacy Ridge / Hardieville



City	Lethbridge
County	Lethbridge
Province	Alberta
Postal Code	T1H6B2

Amenities

Parking Spaces	4
Parking	Off Street, Quad or More Detached

Interior

Interior Features	Laminate Counters, No Animal Home, No Smoking Home
Appliances	Range Hood, Refrigerator, Stove(s), Washer/Dryer, Electric Water Heater
Heating	Forced Air, Natural Gas
Cooling	Central Air
Basement	None

Exterior

Exterior Features	RV Hookup
Lot Description	Back Lane, Back Yard, City Lot, Cleared, Corner Lot, Front Yard, Level, Rectangular Lot, Street Lighting
Roof	Asphalt Shingle
Construction	Wood Frame, Wood Siding
Foundation	Perimeter Wall

Additional Information

Date Listed	June 10th, 2025
Days on Market	30
Zoning	Residential

Listing Details

Listing Office	Onyx Realty Ltd.
----------------	------------------

Data is supplied by Pillar 9â„¢ MLS® System. Pillar 9â„¢ is the owner of the copyright in its MLS® System. Data is deemed reliable but is not guaranteed accurate by Pillar 9â„¢. The trademarks MLS®, Multiple Listing Service® and the associated logos are owned by The Canadian Real Estate Association (CREA) and identify the quality of services provided by real estate professionals who are members of CREA. Used under license.