

# \$173,200 - 108 3 Avenue E, Hanna

---

MLS® #A2229646

## \$173,200

3 Bedroom, 2.00 Bathroom, 1,456 sqft

Residential on 0.14 Acres

Hanna, Hanna, Alberta

Charming, well maintained, spacious home! This is a must see! Beautiful from the get go! Newly painted outside and inside, new shingles (2024), front porch revamped with new entrance stairs, fully fenced yard featuring a large out building, garden shed, and a deck.

Now for the inside! Hardwood floors, modern, upgraded kitchen, renovated main bathroom and upstairs bathroom which will take your breath away! This bathroom is a spa away from the spa!

A large, jet, soaker tub will melt your stresses away.

Main floor laundry, open concept living area, newer furnace and hot water tank that is in good condition. Call to view TODAY!



Built in 1922

## Essential Information

MLS® #	A2229646
Price	\$173,200
Bedrooms	3
Bathrooms	2.00
Full Baths	2
Square Footage	1,456
Acres	0.14
Year Built	1922
Type	Residential
Sub-Type	Detached

Style	1 and Half Storey
Status	Active

### Community Information

Address	108 3 Avenue E
Subdivision	Hanna
City	Hanna
County	Special Area 2
Province	Alberta
Postal Code	T0J 1P0

### Amenities

Parking Spaces	2
Parking	Off Street

### Interior

Interior Features	Ceiling Fan(s), No Animal Ho
Appliances	Dryer, Electric Oven, Refriger
Heating	Forced Air, Natural Gas
Cooling	None
Has Basement	Yes
Basement	Partial, Unfinished

### Exterior

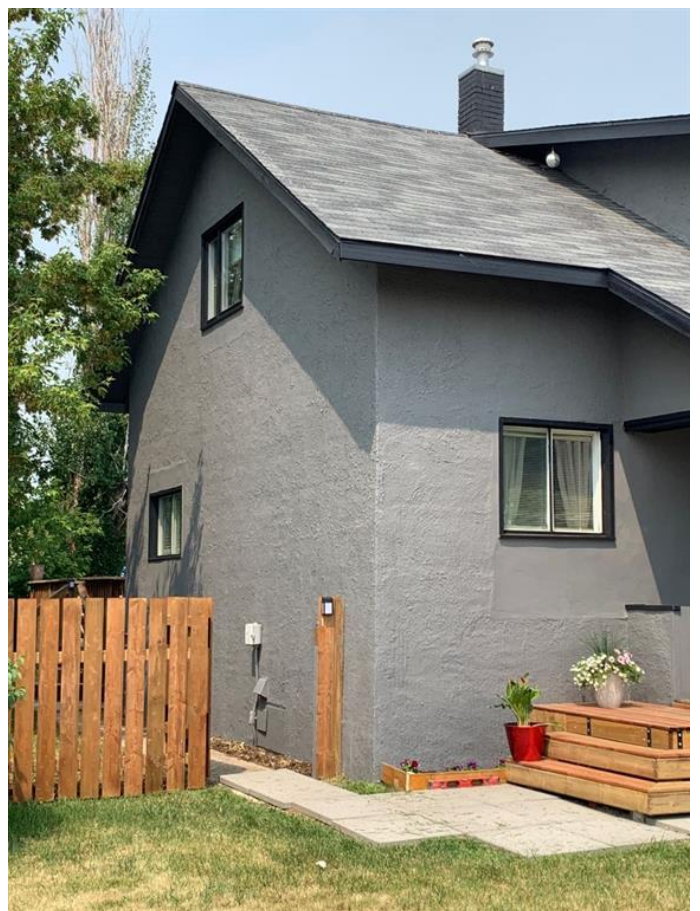
Exterior Features	Other
Lot Description	Back Lane, Landscaped
Roof	Asphalt Shingle
Construction	Unknown
Foundation	Other, Poured Concrete

### Additional Information

Date Listed	June 10th, 2025
Days on Market	29
Zoning	R2

### Listing Details

Listing Office	Hanna Realty
----------------	--------------



Data is supplied by Pillar 9â„¢ MLSÂ® System. Pillar 9â„¢ is the owner of the copyright in its MLSÂ® System. Data is deemed reliable but is not guaranteed accurate by Pillar 9â„¢. The trademarks MLSÂ®, Multiple Listing ServiceÂ® and the associated logos are owned by The Canadian Real Estate Association (CREA) and identify the quality of services

provided by real estate professionals who are members of CREA. Used under license.