

# \$329,900 - 6 115011 Township Road 583, Rural Woodlands County

---

MLS® #A2232697

**\$329,900**

3 Bedroom, 1.00 Bathroom, 1,209 sqft  
Residential on 7.25 Acres

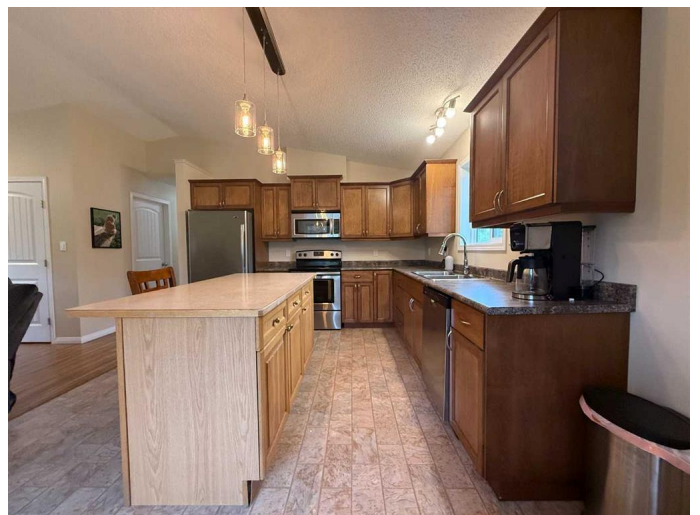
NONE, Rural Woodlands County, Alberta

Charming Country Living on 7.25 Acres!  
Welcome to this beautifully maintained 3-bedroom, 1-bathroom home nestled on a well-landscaped and low-maintenance 7.25-acre parcel. This one-storey home offers comfortable living with a functional layout, perfect for families, retirees, or anyone seeking peace and space. Surrounded by mature trees and natural beauty, the yard is thoughtfully designed for minimal upkeep while still offering the charm of a country retreat. A standout feature is the screened-in garden, ideal for growing vegetables and flowers while protecting your plants from wildlife, perfect for the hobby gardener or those looking for a more self-sufficient lifestyle. Enjoy relaxing evenings on the deck or entertaining guests in the spacious yard which offers plenty of room for outdoor activities. The property offers ample parking and space for future outbuildings, recreational use, or hobby farming. If you're looking for quiet, privacy, and practical acreage living, this affordable and well-kept property is ready to welcome you home.

Built in 2013

## Essential Information

MLS® #	A2232697
Price	\$329,900



Bedrooms	3
Bathrooms	1.00
Full Baths	1
Square Footage	1,209
Acres	7.25
Year Built	2013
Type	Residential
Sub-Type	Detached
Style	Acreage with Residence, Modular Home
Status	Active

### Community Information

Address	6 115011 Township Road 583
Subdivision	NONE
City	Rural Woodlands County
County	Woodlands County
Province	Alberta
Postal Code	T7S 1N8

### Amenities

Parking	None
---------	------

### Interior

Interior Features	Ceiling Fan(s), High Ceilings, Smart Home
Appliances	Dishwasher, Oven, Range Hood, Refrigerator, Washer/Dryer
Heating	Forced Air
Cooling	None
Basement	None

### Exterior

Exterior Features	Fire Pit, Private Yard
Lot Description	Cleared, Landscaped, Low Maintenance Landscape, Open Lot, Private, Rectangular Lot, Sloped Down, Treed, Native Plants
Roof	Asphalt Shingle
Construction	Vinyl Siding
Foundation	Piling(s)

### Additional Information

Date Listed	June 19th, 2025
-------------	-----------------

Days on Market	7
Zoning	COUNTRY RESIDENTIAL DISTR

### **Listing Details**

Listing Office	RE/MAX ADVANTAGE (WHITECOURT)
----------------	-------------------------------

Data is supplied by Pillar 9â„¢ MLS® System. Pillar 9â„¢ is the owner of the copyright in its MLS® System. Data is deemed reliable but is not guaranteed accurate by Pillar 9â„¢. The trademarks MLS®, Multiple Listing Service® and the associated logos are owned by The Canadian Real Estate Association (CREA) and identify the quality of services provided by real estate professionals who are members of CREA. Used under license.