

# \$450,000 - 429 Normandy Road S, Lethbridge

MLS® #A2250038

## \$450,000

2 Bedroom, 2.00 Bathroom, 1,011 sqft

Residential on 0.17 Acres

Glendale, Lethbridge, Alberta

Welcome to 429 Normandy Road South. This charming bungalow sits in one of the city's most sought-after neighborhoods, offering the perfect blend of comfort and convenience.

Step inside to an open-concept kitchen, dining, and living room filled with natural light – an ideal space for entertaining or relaxing with family. The main floor features 2 bedrooms and a functional layout that feels warm and inviting.

Downstairs, the basement provides endless possibilities – create a family rec room, bedroom, guest suite, or home gym to suit your lifestyle. There is already a bathroom downstairs

Outside, you'll find a large lot with plenty of room to enjoy, plus a heated 24' x 21' garage that's perfect for vehicles, hobbies, or extra storage. There is a large concrete pad in the backyard, perfect for parking your RV or Trailer, or build a second garage!

Located close to schools, parks, and green spaces, this home offers both convenience and community in a beautiful setting.

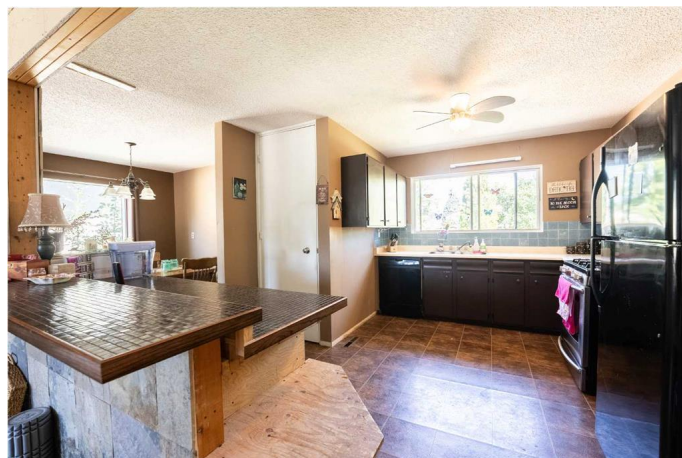
Don't miss the opportunity to make this bungalow your own!

Built in 1972

## Essential Information

MLS® #                   A2250038

Price                     \$450,000



Bedrooms	2
Bathrooms	2.00
Full Baths	2
Square Footage	1,011
Acres	0.17
Year Built	1972
Type	Residential
Sub-Type	Detached
Style	Bungalow
Status	Active

### Community Information

Address	429 Normandy Road S
Subdivision	Glendale
City	Lethbridge
County	Lethbridge
Province	Alberta
Postal Code	T1J 3X9

### Amenities

Parking Spaces	6
Parking	Double Garage Attached, Drive Through, Driveway, Off Street
# of Garages	2

### Interior

Interior Features	Separate Entrance
Appliances	Central Air Conditioner, Dishwasher, Gas Stove, Range Hood, Refrigerator
Heating	Forced Air
Cooling	Central Air
Has Basement	Yes
Basement	Full, Partially Finished

### Exterior

Exterior Features	Private Yard
Lot Description	Back Lane, Back Yard, Fruit Trees/Shrub(s), Landscaped, Private, Street Lighting
Roof	Asphalt Shingle
Construction	Stucco

Foundation                      Poured Concrete

### **Additional Information**

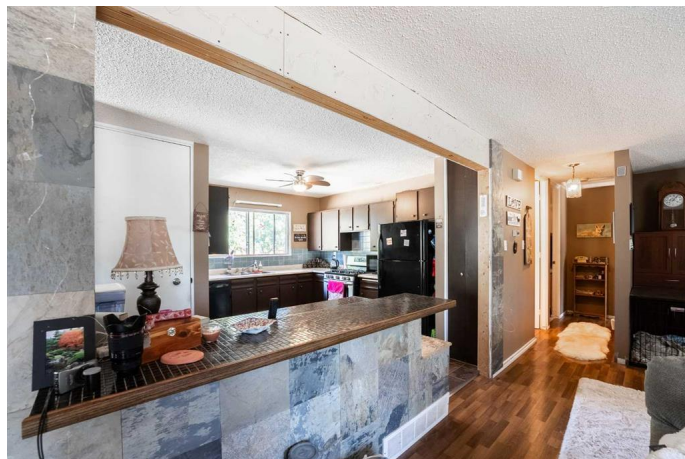
Date Listed                      August 22nd, 2025

Days on Market                1

Zoning                            R-L

### **Listing Details**

Listing Office                   eXp Realty of Canada



Data is supplied by Pillar 9â„¢ MLSÂ® System. Pillar 9â„¢ is the owner of the copyright in its MLSÂ® System. Data is deemed reliable but is not guaranteed accurate by Pillar 9â„¢. The trademarks MLSÂ®, Multiple Listing ServiceÂ® and the associated logos are owned by The Canadian Real Estate Association (CREA) and identify the quality of services provided by real estate professionals who are members of CREA. Used under license.