

# \$565,000 - 588 Strathcona Drive Sw, Calgary

MLS® #A2262108

**\$565,000**

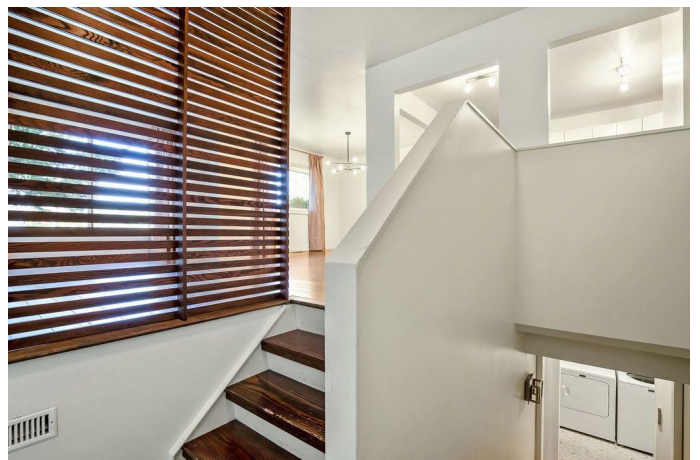
5 Bedroom, 2.00 Bathroom, 1,058 sqft  
Residential on 0.06 Acres

Strathcona Park, Calgary, Alberta

Strathcona Park | 5-Bedroom Semi-Detached  
Bungalow

Rare opportunity to own in the highly sought-after community of Strathcona Park! Whether you're an investor, first-time buyer, or a growing family, this home has it all. Offering over 2,100 sq.ft. of developed living space, this well-maintained property features 5 bedrooms and 2 full bathrooms. Ideally located across from a beautiful park and within the school district for Ernest Manning High School and just steps to Olympic Heights Elementary, this home combines convenience with lifestyle. You're also minutes from downtown, top-rated private and public schools, Westside Recreation Centre, and only a 10-minute walk to the LRT. With the new ring road, getting around the city or out to the Rockies is easier than ever.

Inside, a split staircase leads to the bright and open main level with large west-facing windows. The updated kitchen offers stainless steel appliances, quartz countertops, and direct access to the spacious living and dining areas. The primary bedroom features a patio door opening to a private balcony overlooking the landscaped backyard with mature trees. An updated 5-piece bathroom and two additional bedrooms complete the main floor. The fully developed lower level is perfect for family living or guests, boasting a large recreation room, two spacious legal bedrooms, a modernized bathroom, laundry room, and plenty of storage. Almost every window in the



home has been upgraded for peace of mind. Enjoy the countless amenities of Strathcona Parkâ€™ravin pathways, dog parks, playgroundsâ€™and experience one of Calgaryâ€™s most desirable, family-friendly neighbourhoods.

Donâ€™t miss this incredible opportunity to own in Strathcona at outstanding value. Book your showing today!

Built in 1980

### Essential Information

MLS® #	A2262108
Price	\$565,000
Bedrooms	5
Bathrooms	2.00
Full Baths	2
Square Footage	1,058
Acres	0.06
Year Built	1980
Type	Residential
Sub-Type	Semi Detached
Style	Side by Side, Bungalow
Status	Active

### Community Information

Address	588 Strathcona Drive Sw
Subdivision	Strathcona Park
City	Calgary
County	Calgary
Province	Alberta
Postal Code	T3H 1K4

### Amenities

Parking	None
---------	------

### Interior

Interior Features	Double Vanity, No Smoking Home, See Remarks
Appliances	Dishwasher, Dryer, Electric Stove, Refrigerator, Washer, Window

	Coverings
Heating	Forced Air, Natural Gas
Cooling	None
Fireplaces	None
Has Basement	Yes
Basement	Finished, Full

### **Exterior**

Exterior Features	None
Lot Description	Back Lane, Back Yard, Garden
Roof	Asphalt Shingle
Construction	Brick, Metal Siding, Wood Frame
Foundation	Poured Concrete

### **Additional Information**

Date Listed	October 3rd, 2025
Days on Market	27
Zoning	R-CG

### **Listing Details**

Listing Office	CIR Realty
----------------	------------

Data is supplied by Pillar 9â„¢ MLSÂ® System. Pillar 9â„¢ is the owner of the copyright in its MLSÂ® System. Data is deemed reliable but is not guaranteed accurate by Pillar 9â„¢. The trademarks MLSÂ®, Multiple Listing ServiceÂ® and the associated logos are owned by The Canadian Real Estate Association (CREA) and identify the quality of services provided by real estate professionals who are members of CREA. Used under license.