

\$949,000 - 106, 140 Stonecreek Road, Canmore

MLS® #A2265114

\$949,000

2 Bedroom, 2.00 Bathroom, 1,552 sqft
Residential on 0.00 Acres

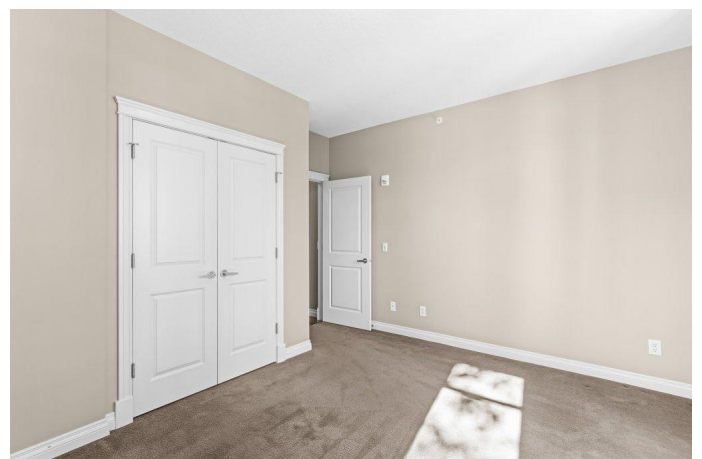
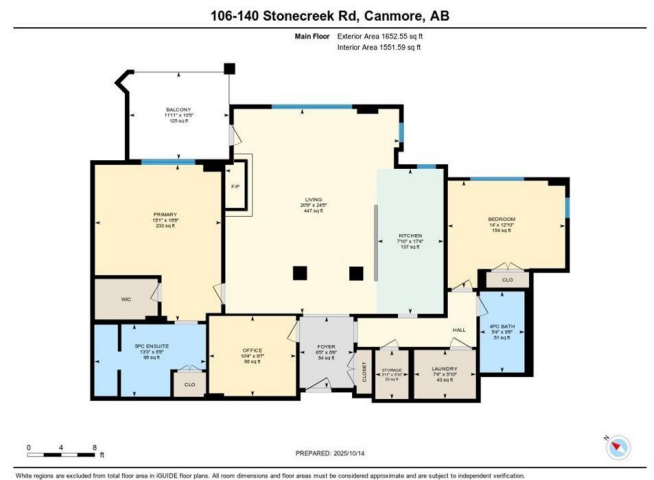
Silvertip, Canmore, Alberta

Welcome to your perfect mountain retreat! This spacious 2-bed + den condo offers bright, open-concept, one-level living with south-east exposure and abundant natural light. Enjoy cozy evenings by the natural stone gas FP, or sip your morning coffee on the large east-facing deck while taking in tranquil forest and mountain views. The spacious primary suite is a true sanctuary, featuring a luxurious 5-piece ensuite with dual vanities, a soaker tub, and a separate shower. Your guests will appreciate the privacy of the second bed, located on the opposite side of the unit, with a 4-piece bath nearby. The den is ideal for a home office or additional sleeping area. Additional features include in-suite storage, 2 titled parking stalls, and extra storage in the underground parkade—perfect for all your mountain gear. Built with concrete construction and 9-foot ceilings, this quiet condo combines comfort, quality, and stunning natural surroundings.

Built in 2003

Essential Information

MLS® #	A2265114
Price	\$949,000
Bedrooms	2
Bathrooms	2.00
Full Baths	2
Square Footage	1,552



Acres	0.00
Year Built	2003
Type	Residential
Sub-Type	Apartment
Style	Single Level Unit
Status	Active

Community Information

Address	106, 140 Stonecreek Road
Subdivision	Silvertip
City	Canmore
County	Bighorn No. 8, M.D. of
Province	Alberta
Postal Code	T1W 3J3

Amenities

Amenities	Elevator(s)
Parking Spaces	2
Parking	Parkade

Interior

Interior Features	Breakfast Bar
Appliances	Dishwasher, Dryer, Microwave, Microwave Hood Fan, Refrigerator, Washer, Electric Oven
Heating	Baseboard
Cooling	None
Fireplace	Yes
# of Fireplaces	1
Fireplaces	Gas
# of Stories	4

Exterior

Exterior Features	Balcony
Lot Description	Cleared
Construction	Concrete

Additional Information

Date Listed	October 17th, 2025
Days on Market	3

Zoning

12

Listing Details

Listing Office

RE/MAX Alpine Realty

Data is supplied by Pillar 9â„¸ MLSÂ® System. Pillar 9â„¸ is the owner of the copyright in its MLSÂ® System. Data is deemed reliable but is not guaranteed accurate by Pillar 9â„¸. The trademarks MLSÂ®, Multiple Listing ServiceÂ® and the associated logos are owned by The Canadian Real Estate Association (CREA) and identify the quality of services provided by real estate professionals who are members of CREA. Used under license.